

WINTER/2026

# Laboratory Services

## IN THIS ISSUE

Molecular Characterization  
Initiative

NCH is Transitioning to Epic  
Beaker – Time to Test!

Laboratory Services Important Test  
Announcements

Spotlight on Pathology

Helpful Reminders



**NATIONWIDE  
CHILDREN'S®**

*When your child needs a hospital, everything matters.*



# Molecular Characterization Initiative



The Molecular Characterization Initiative (MCI) is part of the National Cancer Institute's (NCI) Childhood Cancer Data Initiative (CCDI) in partnership with the Children's Oncology Group (COG). This project enables state-of-the-art molecular testing at no cost to families and returns clinically actionable results in a timely manner with the additional aim to distribute deidentified genomic data to the research community, enhancing the understanding of genetic factors driving pediatric cancers.

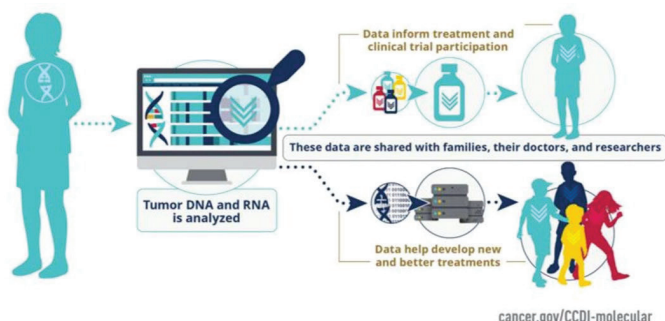
To participate in MCI, patients enroll on the COG registry trial, Project:EveryChild (APEC14B1), for specimen collection, processing, and demographic annotation. Results of MCI testing may aid in treatment decisions and help to determine eligibility for other disease-specific clinical trials.

## Eligibility:

Participants must be newly diagnosed children, adolescents, or young adults (AYAs) age 25 years or younger who are being treated at a COG-affiliated hospital. Between the ages of 25-39, AYAs can enroll on MCI through COG's Project AYA from a National Clinical Trials Network (NCTN) member institution if screening for eligibility for entry on a COG-sponsored clinical trial.

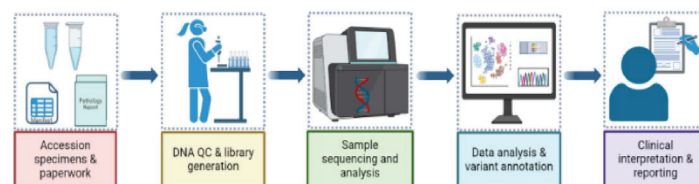
## Eligible Diagnoses:

- Central nervous system tumors (CNS)
- Soft tissue sarcomas (STS)
- Certain rare childhood cancers (RAR)
- High-risk neuroblastoma (NBL)
- Metastatic Ewing sarcoma (EWS)



## Testing Submission:

Required materials are submitted to the COG Biobank hosted by the Biopathology Center (BPC) at Nationwide Children's Hospital. Testing is performed by The Steve and Cindy Rasmussen Institute for Genomic Medicine (IGM) at Nationwide Children's Hospital.



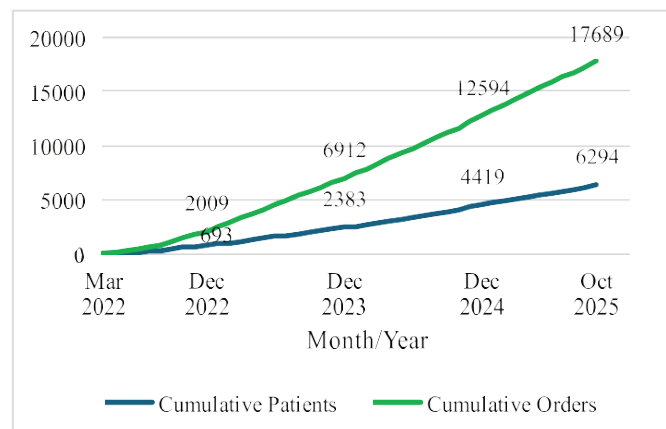
## Tests Performed in 14 days:

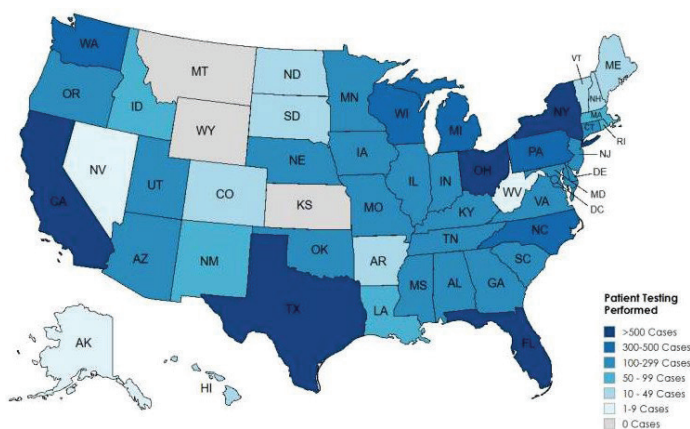
Assay	Sample	Description/ Result Type
Somatic Disease/ Germline Comparator Exome	Tumor and germline DNA	Enhanced paired tumor-normal exome sequencing for the detection of variants and copy number in both disease-involved and the comparator normal samples
CNS Tumor Classification by Methylation Array	Tumor DNA	A DNA-based methylation array assay for CNS tumor disease classification
Solid Tumor Fusion Analysis*	Tumor RNA	A targeted assay for detection of gene fusions and internal tandem duplications

*\*Future plan to transition to RNA Sequencing*

## Program Highlights:

Submissions



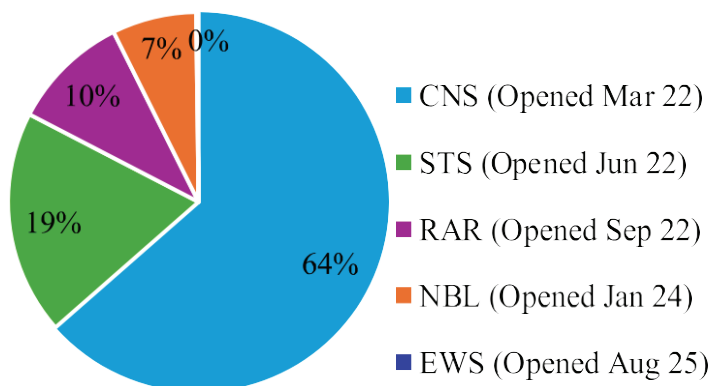


## Patient Origin

IGM receives submissions from the U.S., including D.C. and Puerto Rico, Canada, Australia, and New Zealand

## Most Enrolled Tumor Types

CNS	<ul style="list-style-type: none"> <li>• Medulloblastoma</li> <li>• Pilocytic astrocytoma</li> <li>• Posterior fossa ependymoma</li> <li>• Diffuse midline glioma</li> </ul>
STS	<ul style="list-style-type: none"> <li>• Embryonal rhabdomyosarcoma</li> <li>• Alveolar rhabdomyosarcoma</li> <li>• Spindle cell neoplasm</li> <li>• Desmoid fibromatosis</li> </ul>
RAR	<ul style="list-style-type: none"> <li>• Papillary thyroid carcinoma</li> <li>• Adrenal cortical carcinoma</li> <li>• Sertoli-Leydig cell tumor</li> <li>• Retinoblastoma</li> </ul>
NBL	<ul style="list-style-type: none"> <li>• Neuroblastoma</li> <li>• Ganglioneuroblastoma</li> </ul>
EWS	<ul style="list-style-type: none"> <li>• Ewing Sarcoma</li> <li>• Small round cell blue tumor</li> </ul>



## Medical Meaningful Findings

### Somatic Disease/Germline Comparator Exome

- 87% of patients with at least one reportable finding
- 14% of patients with a reportable finding identified in the germline comparator sample

### CNS Tumor Classification by Methylation Array

- 84% of tumors classified with high confidence

### Solid Tumor Fusion Analysis

- 31% of tumors with a reportable finding

## Reports and Data:

- MCI reports are returned via a secure web portal to the clinician and clinical research associate within 21 days of receipt of all required materials at the BPC.
- MCI data can be accessed through the CCDI Data Ecosystem.

## Additional Information:

For additional information about MCI, gene lists, accessing data, contact information, and more, visit: [ccdi.cancer.gov/MCI](https://ccdi.cancer.gov/MCI).

Information on these molecular assays, including how to order clinically if patient is in-eligible for MCI:  
**IGM Featured Genetic Tests**



## IGM's MCI Contact Information:

Email: [igmmci@nationwidechildrens.org](mailto:igmmci@nationwidechildrens.org)  
Phone: 614-722-5321, Option 1, then Option 5

# NCH is Transitioning to Epic Beaker – Time to Test!



Nationwide Children's Hospital (NCH) Laboratory Services will transition from **Clinisys Sunquest/CoPath to Epic Beaker on November 6, 2026.** Epic Beaker is

Epic's laboratory information system and will enable standardized workflows, tools, and services across our organization.

## Project Status

Our implementation teams have completed the system build and are now entering the testing phase. This includes comprehensive testing of all interfaces and the full NCH Beaker compendium for orders and results.

### Key Details

- **Clinisys Atlas Integration:** NCH will maintain interfaces with Clinisys Atlas for several clients. Portal access will remain unchanged for practices currently using this functionality.
- **Bidirectional Integration Testing:** Clients with bidirectional integration through Atlas will participate in full mapped record testing from **April through August 2026.**
- **Ohio Health Information Exchange:** NCH will continue submitting all results to Clinisync as required by law. Providers will be able to review patient results via the state website.

## Result Delivery

- **Fax Recipients:** Fax delivery will continue. To ensure accuracy and timeliness, NCH will send mock test results beginning May 2026 to confirm fax numbers and STAT notification processes.
- **Mail Recipients:** Mail delivery will remain unchanged.
- **Email Results and Invoices:** Please note that Epic Beaker does not support email delivery of results or financial invoices. This functionality will be discontinued.

In preparation for this transition, please update your NCH Laboratory Services Account Representative with any changes to your fax, email, or mailing addresses to ensure uninterrupted service.

We appreciate your partnership and will continue to provide updates as we progress through this transition.

# Laboratory Services Important Test Announcements

## SOLUBLE TRANSFERRIN RECEPTOR UPDATE

Effective 11/11/2025, the Reference Lab for Soluble Transferrin Receptor (XSOLTR) testing will be discontinuing the test and test code XSOLTR will be deactivated. The new test Soluble Transferrin Receptor, Serum or Plasma (XSTFR) will be the replacement test. Sample collection requirements will change. Refer to our Laboratory Test Directory for complete collection information.

## INACTIVATION OF BETA-2 TRANSFERRIN, DETECT CSF

Effective 11/11/2025, Beta-2 Transferrin, Detect CSF (XB2TRN) will be deactivated as it is no longer offered by our reference laboratory. Beta-Trace Protein, Body Fluid (XMIS) will be the recommended alternative test.

## Spotlight on Pathology:

Dr. Dalia Ibrahim – Dalia Ibrahim, MD, MS, is an Assistant Professor in the Department of Pathology and Laboratory Medicine at The Ohio State University College of Medicine and a staff pathologist in the Department of Pathology and Laboratory Medicine at Nationwide Children's Hospital. She graduated from Assiut University School of Medicine in Egypt. She completed a combined Anatomic and Clinical Pathology Residency training at the University of Toledo, followed by a Renal and Transplant Pathology Fellowship at The Ohio State University. She is certified in Anatomic and Clinical Pathology by the American Board of Pathology.



While Dr. Ibrahim specializes in medical renal and transplant pathology, she is equally dedicated to delivering exceptional multidisciplinary patient care. She also has a true passion for education and enjoys mentoring and guiding learners at every stage. She has been extensively involved in teaching medical students, pathologists' assistant students, residents, and fellows.

"Originally from Egypt, I moved to the U.S., specifically to New Orleans, LA, just before Hurricane



Katrina and have been exploring life ever since. When I'm not in the lab, you'll likely find me planning my next adventure—especially if it involves a beach. Travel is a passion of mine. Egypt holds a special place in my heart, and I try to visit every year. While I haven't yet taken a Nile cruise, I highly recommend everyone does - it's on my list!

"I'm also a lover of long walks, peaceful hikes, a good book, and baking. Oh, and I cannot forget my passion for crime drama, like NCIS, Criminal Minds, and Bones (to name a few)! It's my favorite way to unwind and keep my inner detective entertained!" – Dr. Dalia Ibrahim.



## Lockbox Helpful Hints and Outdoor Temperature Reminders

Lockboxes should be placed in a location that will not be significantly impacted by harsh weather conditions or extreme temperatures. It is best to keep lockboxes out of direct sunlight, away from where water pools.

For the safety of our couriers, the location selected should be well lit at all times of the day and night. If you are uncertain where to place your lockbox, contact our Lab Outreach Sales team at

**LabOutreachSales@nationwidechildrens.org** for guidance.



All samples should be placed in a biohazard bag (see example at right), with the correct storage/transport temperature marked on bag. Failure to mark the correct temperature on the bag may result in it being transported incorrectly. Samples transported at the wrong temperature may be rejected for testing in the lab. It is imperative that samples placed in a lockbox outdoors prior to transport to the laboratory be

maintained at the appropriate temperature, especially those days and evenings when outside temperatures dip below freezing or soar during the day.

### Outside temperature is above 46°F:

If refrigerated samples are stored in your lockbox, then one or two **refrigerated cold packs** should be

placed in the lockbox to maintain the samples at the refrigerated temperature until the courier picks them up. The **gel pack should not be frozen** since you do not want refrigerated whole blood samples to freeze.

**Note: Please be aware of your lockbox if it is sitting in the sun or on concrete/asphalt walkways. The internal temperature of the lockbox may be warmer than the outside temperature.**

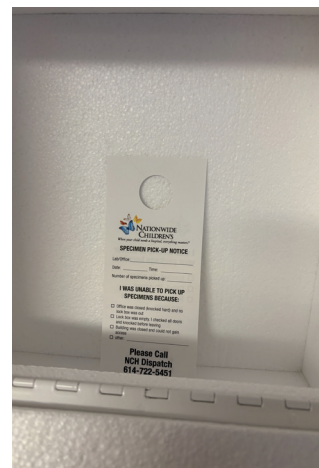
### Outside temperature is below 40°F:

If refrigerated samples are stored in your lockbox, a **room temperature gel pack** should be placed in the lockbox to prevent the samples from freezing while left outside. The **gel pack should not be frozen** since you do not want refrigerated whole blood samples to freeze.

**Frozen Samples** – should not be placed in a lockbox and arrangements should be made for a courier to pick up the samples in your office. If your office is not set up on a daily route, please call Courier Services at 614-722-5451 for a pickup. Same day service will depend on the location and hours, as well as courier availability.

Each morning, your office should check lockboxes to:

- Verify that all samples have been collected from the box. If a sample remains in the lockbox, call Courier Services at (614) 722-5451 immediately.
- Pull out all gel packs and other packaging.
- Review the courier tag for the date/time of the last pick-up and the number of samples retrieved. After review, the tag can be removed and discarded. Please do not allow old tags to accumulate in the lockbox.



## 2025 Client Survey

We want to hear from you! Please take a few minutes to complete our 2025 Client Survey. These will be arriving in the mail towards the end of January. Results can be returned by fax. All surveys returned by February 28, 2026 that include the practice name, will be entered into a drawing to receive a box of Cheryl's Cookies for your office.



**NATIONWIDE  
CHILDREN'S®**

*When your child needs a hospital, everything matters.*

Nationwide Children's Hospital  
700 Children's Drive  
Columbus, OH 43205

---

NON-PROFIT ORG.  
U.S. POSTAGE  
**PAID**  
COLUMBUS, OH  
PERMIT NO. 777

---

## Can Nationwide Children's Laboratory Services help your practice?

If you would like to become a client or learn more information about Nationwide Children's Laboratory Services, contact us at (800) 934-6575 or visit our website at **NationwideChildrens.org/Lab**. Would you like to receive the Nationwide Children's Laboratory Services Newsletter electronically? Please e-mail us at **LaboratoryServices@NationwideChildrens.org** and let us know!

Lab Account Representatives are available via email to assist with any questions or concerns.

Stacy Burrier  
Larry Thompson  
Jessica Walters

**Stacy.Burrier@nationwidechildrens.org**  
**Larry.Thompson@nationwidechildrens.org**  
**Jessica.Walters2@nationwidechildrens.org**



**NATIONWIDE  
CHILDREN'S®**

*When your child needs a hospital, everything matters.*