

BC4Teens

Set Up Guide for LARC Insertions and Removals



NATIONWIDE CHILDREN'S®

When your child needs a hospital, everything matters.

IUD Insertion (Tray 1 of 2)

1. Clean tray
2. Clean gloves
3. Speculum with light
4. Lubricant
5. Swabs, sterile tray, betadine from IUD kit
6. Scopettes
7. Sterile gloves



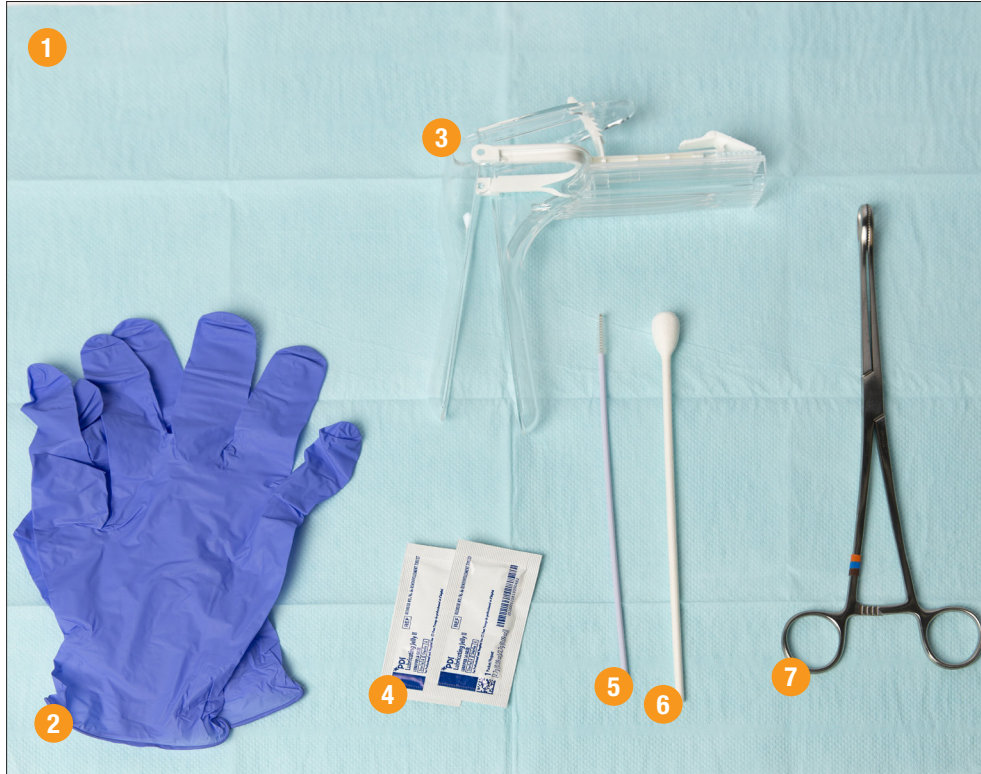
IUD Insertion (Tray 2 of 2)

1. Sterile tray
2. Sound
3. Tenaculum or Allis clamp
4. Straight or curved scissor



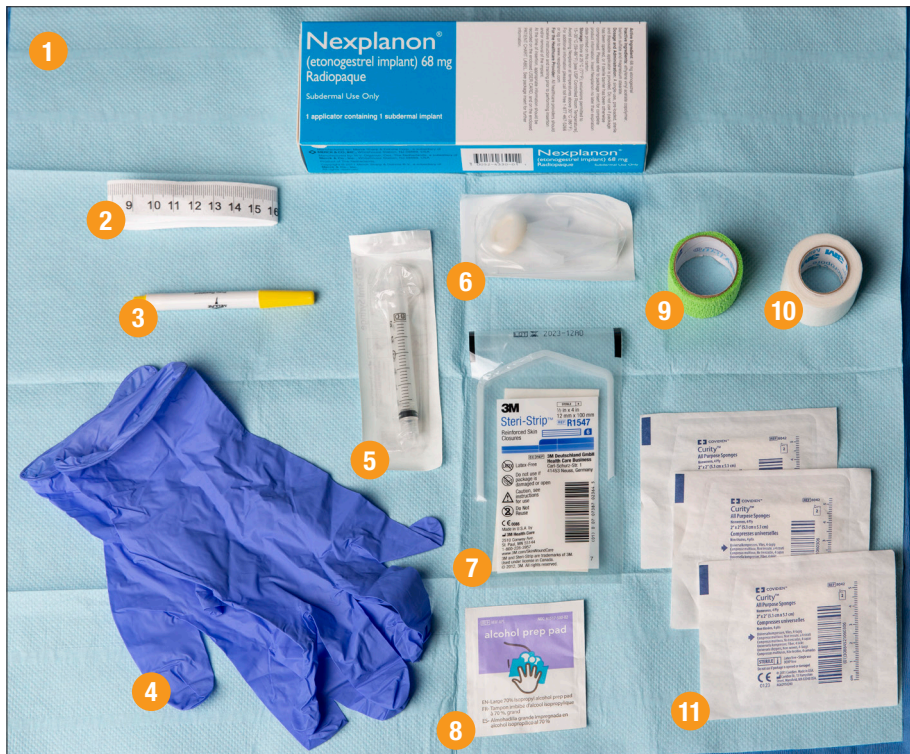
IUD Removal

1. Clean tray
2. Sterile gloves
3. Speculum with light
4. Lubricant
5. Cytobrush
6. Scopette
7. Ring forceps

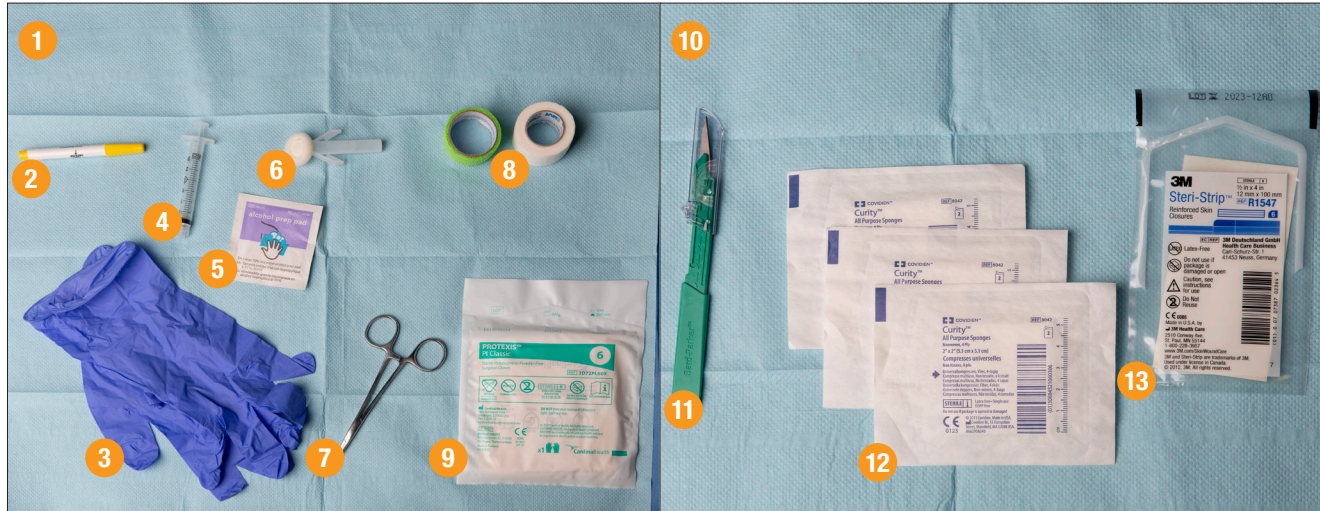


Nexplanon Insertion

1. Clean tray
2. Ruler
3. Sharpie
4. Clean gloves
5. 3ml syringe with 25 gauge 1½" needle – Lidocaine with Epinephrine
6. ChlorPrep
7. Steri strips
8. Alcohol prep
9. Coban or Kerlix
10. Tape
11. 2 x 2 sterile gauze



Nexplanon Removal



1. Clean tray
2. Sharpie
3. Clean gloves
4. 3 ml syringe with 25 gauge 1½" needle – Lidocaine with Epinephrine

5. Alcohol prep
6. ChlorPrep
7. Mosquito Hemostat (unopened)
8. Coban or Kerlix & Tape
9. Sterile gloves

10. Sterile tray
11. Scalpel
12. 2 x 2 Sterile gauze
13. Steri strips

**BC4Teens offers comprehensive, outpatient contraceptive services
for adolescent girls and young women up to age 25.**

**For provider resources such as fact sheets, toolkits and more, visit:
[NationwideChildrens.org/BC4Teens-For-Providers](https://www.nationwidechildrens.org/BC4Teens-For-Providers)**



NATIONWIDE CHILDREN'S®

When your child needs a hospital, everything matters.