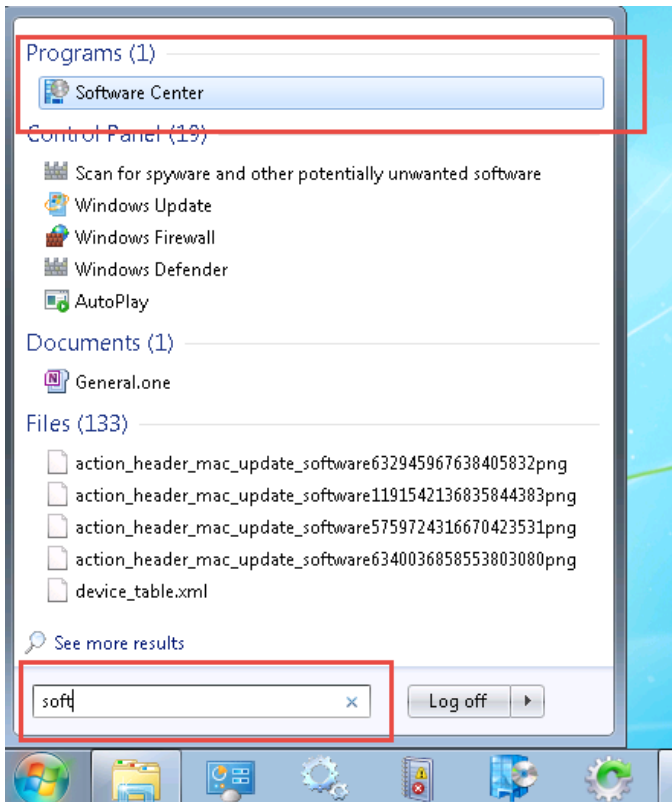


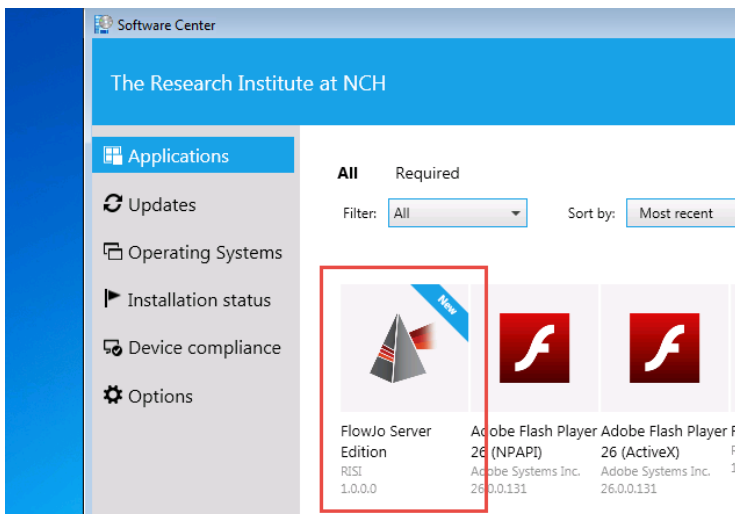
FlowJo Server Edition Installation and Usage

Installation

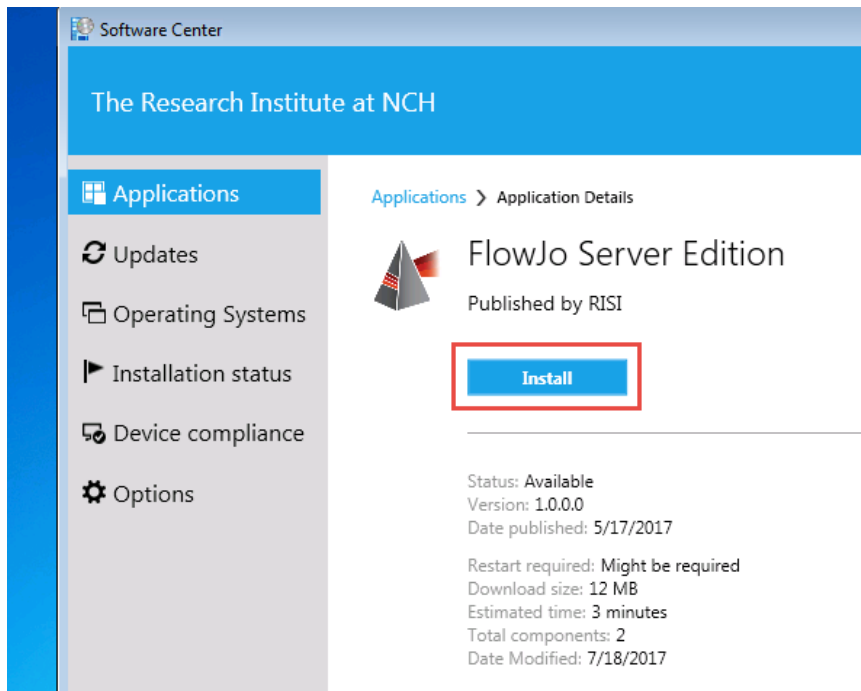
1. Open Start Menu, find and launch Software Center



2. Find and click FlowJo Server Edition



3. Click Install



4. Once install is complete, you should see FlowJo Server Edition shortcut on the Desktop and in the Start Menu

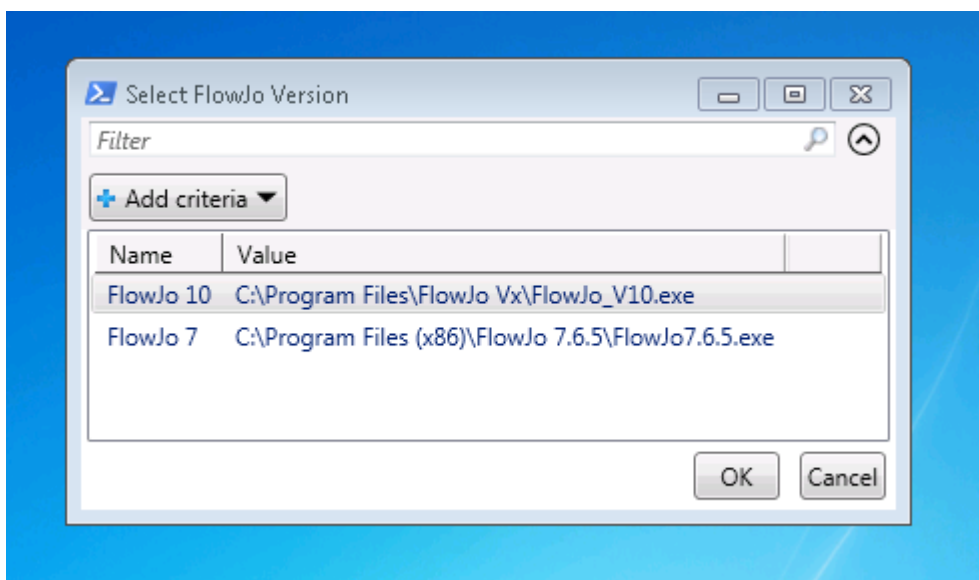


Usage

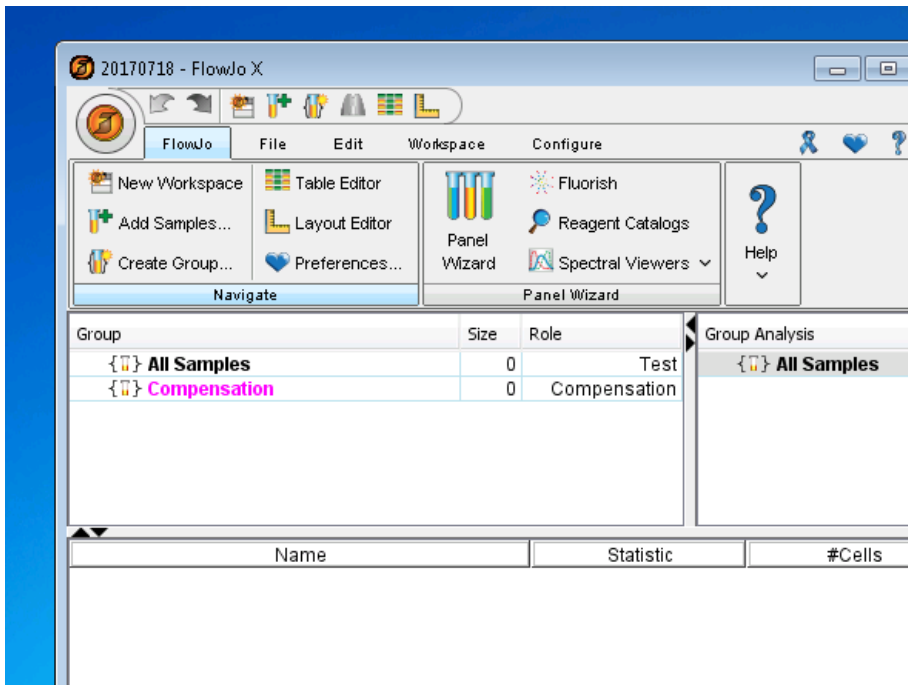
1. Launch FlowJo Server Edition



*If you have multiple versions of FlowJo installed, it will ask you to choose a version. Choose the version and click OK.



2. FlowJo should Launch



3. When you are done with FlowJo, please exit out of it completely to release the dongle for other people to use. If you are using FlowJo 10, please click the menu button on the top left corner, click Exit.

