

Steps for creating and shipping scrolls:

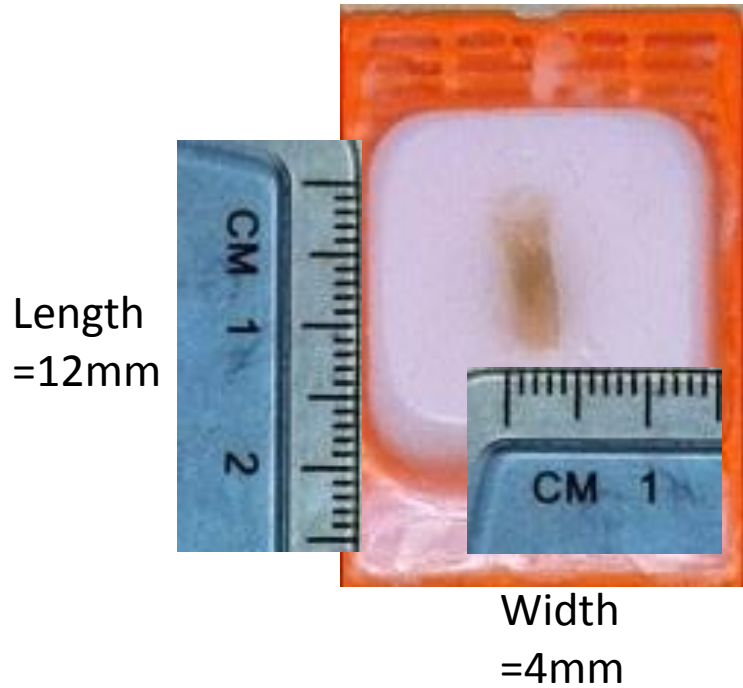
1. Measure length and width (in mm) of tissue specimen contained within paraffin block.
2. Double click on excel table below to open editing function.
3. Enter tumor length and width values measured in step 1.
4. Number of 10 micron scrolls required is shown in yellow.
5. Put scrolls in tube for shipping (Eppendorf or cryovial)
6. Ship immediately to the BCR ambient (please contact for airbill)

“Double Click” below to activate table

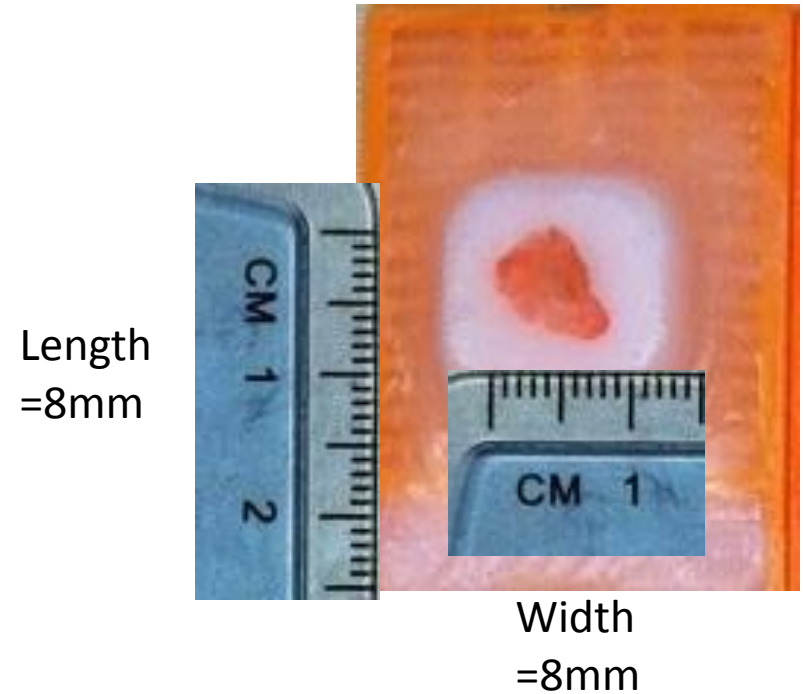
Scroll Calculator			
Enter tissue area width:	12	mm	
Enter tissue area length:	12	mm	
Enter scroll thickness:	10	microns	(please submit 10 micron scrolls)
How much volume of tissue do you need?		12	mm ³
Cut this many scrolls >>>	8		

Examples for measuring tumor area are on next slide.

Example #1



Example #2



To calculate the number of 10uM thick scrolls... = $12 / (0.01 * L * W)$

↑ ↑ ↑ ↑

Total surface area to be cut (mm³) Scroll thickness (mm) Tissue Length (mm) Tissue Width (mm)

Example #1 Answer –

$$12 / (0.01 * 12 * 4) = 25 \text{ Scrolls}$$

Example #2 Answer –

$$12 / (0.01 * 8 * 8) = 19 \text{ Scrolls}$$