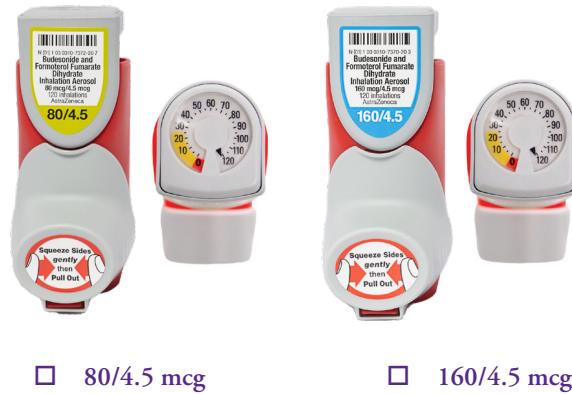


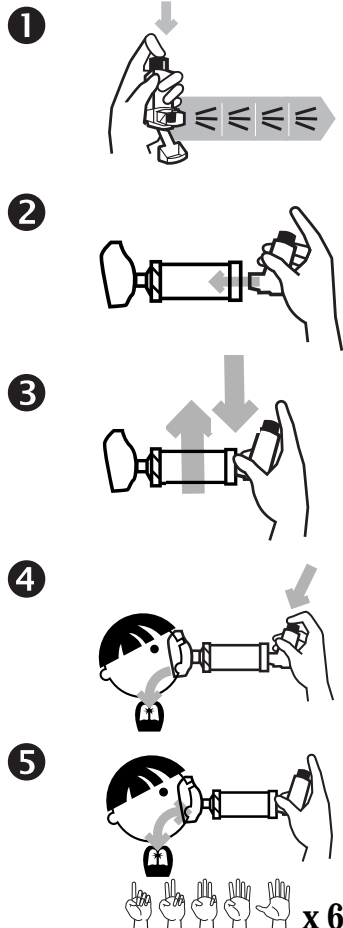
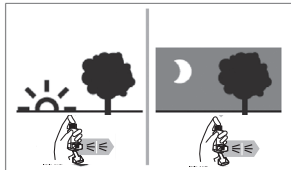
**Symbicort®**  
(Budesonide  
and Formoterol with  
spacer  
and mask)  
Metered dose inhaler



**Reason for taking this medicine:**

- To help reduce and prevent swelling in the lungs.
- This is a controller medicine and will not help if you are coughing, wheezing or have shortness of breath.
- This is a medicine that must be used every day.

**How and when to take this medicine:**



- Use a spacer and mask with this inhaler.
- Use 2 times each day - 2 puffs in the morning and 2 puffs in the evening.

1. The first time you use this inhaler:
  - Shake and then push down on the inhaler 4 times to prime or waste the inhaler.
  - Spray the medicine into the air.
  - The dose counter should show “120.”

2. Place inhaler in the end of spacer.

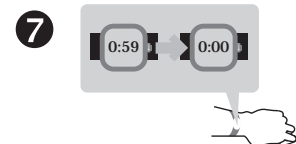
3. Shake well for 10 seconds.

4. Place mask tightly over the nose and mouth.
  - Push down on the inhaler.
  - Take slow deep breaths.

5. Breathe in and out 6 times.

6. Wait 1 minute

- Repeat steps 3-5 for second puff.



### Possible side effects:

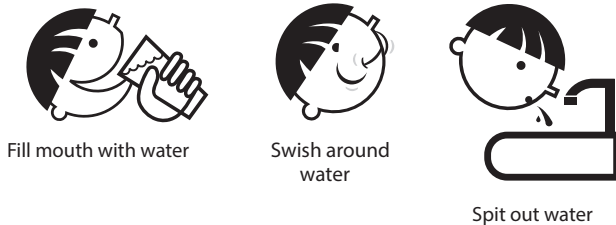


- Dry mouth
- Sore throat
- Hoarse voice
- Headache
- Fast heartbeat
- Can make you hyper or cause your body to shake.

### Call the doctor or clinic if:

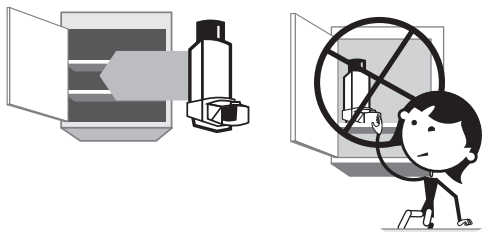
- You are exposed to chickenpox or measles.
- You can see blood when you spit.
- You have white spots in the mouth, called thrush.
- You have questions about this medicine or how to use it.

### Important things to remember:



- [Rinse your mouth out with water, brush teeth, or get a drink after every use. This can help avoid getting thrush.](#)
- If you suddenly have trouble breathing, [use your rescue inhaler, albuterol.](#)
- SYMBICORT® may take a few weeks before it starts to work.
  - [Use this medicine until your doctor tells you to stop.](#)
- Never put metal canister in water.
- Clean plastic holder each week:
  - SYMBICORT® has a built-in counter; do not remove the metal canister. Use a cotton swab to clean the opening where the medicine sprays out of the canister.
- Clean spacer and mask each week:
  - Soak in warm soapy water for 15 min.
  - Run water through it, shake off water and set out to dry.
- SYMBICORT® has a dose counter to tell you when the inhaler is empty.
- [Refill your inhaler when the dose counter shows "020"](#)
- [Throw the inhaler away 3 months after taking it out of the foil pouch, even if you have not used it all.](#)

### How to store:



- Store in a cool dry cabinet.
- Do not store in bathroom.
- [Keep out of reach of children.](#)