

# Pulmicort Flexhaler™ (Budesonide)

Dry powdered inhaler



□ 90 mcg

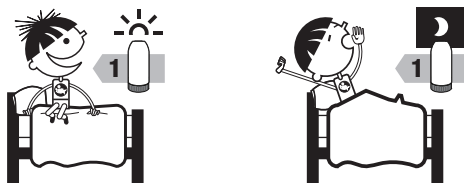
□ 180 mcg



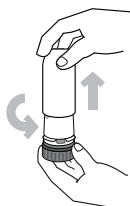
## Reason for taking this medicine:

- To help reduce and prevent swelling in the lungs.
- This is a controller medicine and will not help if you are coughing, wheezing or have shortness of breath.
- This is a medicine that must be used every day.

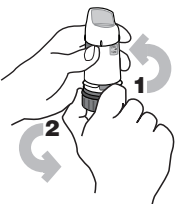
## How and when to take this medicine:



1



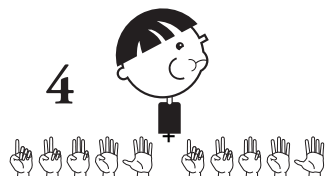
2



3



4



- Use 2 times each day, as directed by your doctor.

The first time you use this medicine:

- Hold the inhaler in the middle with your finger and thumb of one hand, and twist the brown base all the way in one direction and then all the way in the other direction.
- You will hear it click.
- Repeat this step a second time.
- You will not need to prime the Flexhaler unit again.

### 1. Open the inhaler:

- Hold in the upright position with the brown base on the bottom.
- Twist and lift off the white cover.

### 2. Twist and Click:

- Hold the inhaler in the middle with your finger and thumb of one hand, and twist the brown base with the other hand, going all the way in one direction and then all the way in the other direction. You will hear it click.
- Do not shake the inhaler.

### 3. Inhale a dose:

- Turn your head to the side and breathe out – do not breathe into the inhaler.
- Close mouth tightly around the mouthpiece.
- Breathe in fast and deep through the mouthpiece.  
SUCK LIKE A MILKSHAKE!
- You may not feel or taste the medicine.



### 4. Hold your breath for 10 seconds.

Possible side effects:

- Dry mouth
- Sore throat
- Hoarse voice
- Headache



Call the doctor or clinic if:

- You are exposed to chickenpox or measles.
- You can see blood when you spit.
- You have white spots in the mouth, called thrush.
- You have questions about this medicine or how to use it.

Important things to remember:



Fill mouth with water



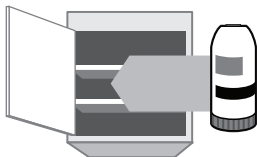
Swish around water



Spit out water

- Rinse your mouth out with water, brush teeth, or get a drink after every use. This can help avoid getting thrush.
- If you are suddenly having trouble breathing, use your rescue inhaler, albuterol.
- Pulmicort Flexhaler™ may take a few weeks before it starts to work  
– Use this medicine until your doctor tells you to stop.
- Pulmicort Flexhaler™ has a built in dose counter to tell you when the inhaler is empty.
- Refill your inhaler when the dose counter shows “20”.

How to store:



- Store in a cool dry cabinet.
- Do not store in bathroom.
- Keep out of reach of children.