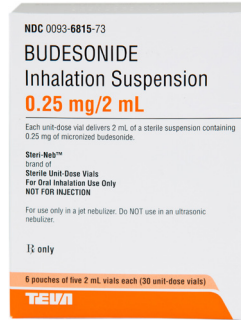
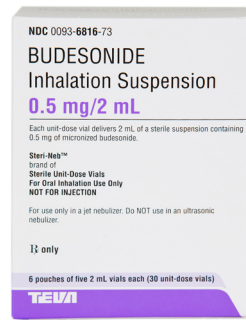


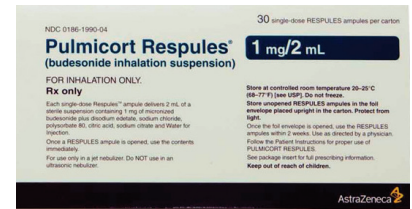
Pulmicort Respules[®] (Budesonide) Suspension for inhalation



☐ 0.25mg/2mL



☐ 0.5mg/2mL

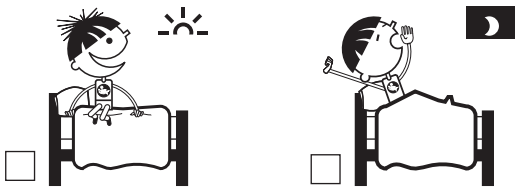


☐ 1mg/2mL suspension

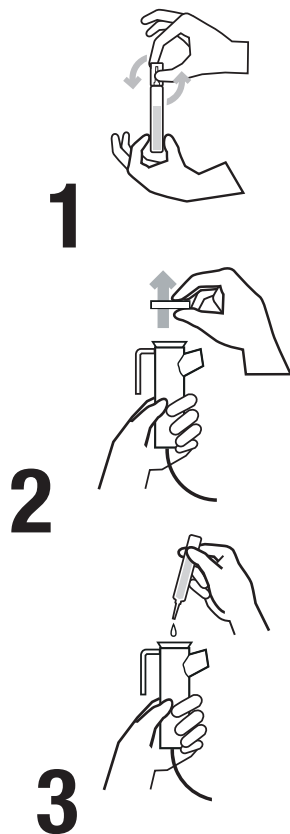
Reason for taking this medicine:

- To help reduce and prevent swelling in the lungs.
- This is a controller medicine and will not help if you are coughing, wheezing or have shortness of breath.
- This is a medicine that must be used every day.

How and when to take this medicine:



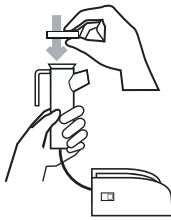
- Use with a nebulizer machine.
- Use a vial 1 or 2 times per day, as directed by your doctor.



Gently shake the vial before using.

1. Twist open the vial.
2. Lift cap from nebulizer.
3. Empty the liquid into the nebulizer chamber.

4



4. Put cap back onto nebulizer.

5



- Children 6 years and older:
 - Use a mouthpiece
 - Sit up and breathe in and out



- Children under 6 years old:
 - Use mask
 - Sit up and breathe in and out

5. Turn on the nebulizer.

6. It will take 10-15 minutes to get the full treatment. The nebulizer will start to sputter near the end of the treatment. Turn off the nebulizer when the chamber is empty.

Possible side effects:



- Dry mouth
- Sore throat
- Hoarse voice
- Headache

Call the doctor or clinic if:

- You are exposed to chickenpox or measles.
- You can see blood when you spit.
- You have white spots in the mouth, called thrush.
- You have questions about this medicine or how to use it.

Important things to remember:



Fill mouth with water



Swish around water



Spit out water

- Rinse your mouth out with water, brush teeth, or get a drink after every use. This can help avoid getting thrush.
- If you are suddenly having trouble breathing, use your rescue inhaler, albuterol.
- Pulmicort® Respules may take a few weeks before it starts to work.
 - Use this medicine until your doctor tells you to stop.
- Clean nebulizer machine after each use.
 - Unscrew plastic chamber
 - Soak in warm soapy water for 15 minutes
 - Run water through it, shake off water, and set out to dry

How to store:

- Store in a cool dry cabinet.
- Do not store in bathroom.
- Keep out of reach of children.

