

Asmanex[®] Twisthaler[®]

(Mometasone furoate)
in 30, 60, or 120 doses

Dry powder inhaler



□ 110mcg



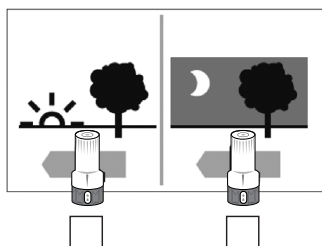
□ 220mcg



Reason for taking this medicine:

- To help reduce and prevent swelling in the lungs.
- This is a controller medicine and will not help if you are coughing, wheezing or have shortness of breath.
- This is a medicine that must be used every day.

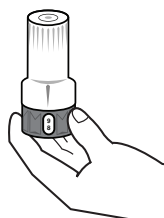
How and when to take this medicine:



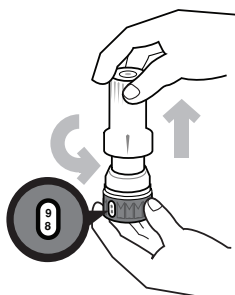
Use 1 or 2 times each day, as directed by your doctor.

1. Open the inhaler

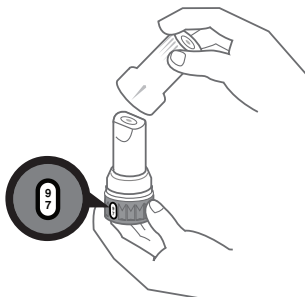
- Hold inhaler upright with the colored base on the bottom.



- Hold the bottom and twist the white cap to the left, you will hear and feel a click.



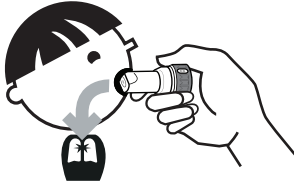
- Lift the cap off.
- Make sure the arrow is lined up with the dose counter.
- Do not shake the inhaler.



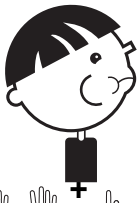


2. **Inhale a dose**

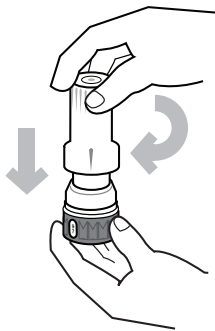
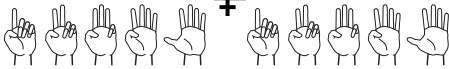
- Turn your head to the side and breathe out
- Do not breathe into the inhaler



- Close mouth tightly around the mouthpiece.
- Breathe in fast and deep through the mouthpiece.
SUCK LIKE A MILKSHAKE!
- You may not feel or taste the medicine.



3. **Hold your breath for 10 seconds.**



4. Replace the cap and twist it to the right until it clicks. The cap must be closed to load the next dose.

Possible side effects:

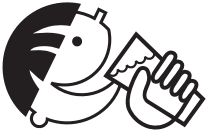


- Dry mouth
- Sore throat
- Hoarse voice
- Headache

Call the doctor or clinic if:

- You are exposed to chickenpox or measles.
- You can see blood when you spit.
- You have white spots in the mouth, called thrush.
- You have questions about this medicine or how to use it.

Important things to remember:



Fill mouth with water



Swish around water



Spit out water

- Rinse your mouth out with water, brush teeth, or get a drink after every use. This can help avoid getting thrush.
- If you suddenly have trouble breathing, use your rescue inhaler, albuterol.
- Asmanex[®] may take a few weeks before it starts to work.
 - Use this medicine until your doctor tells you to stop.
- Wipe the mouthpiece with a dry cloth after each use.
- Refill your inhaler every 30 days or when the dose counter shows "05".

How to store:

- Store in cool dry cabinet.
- Do not store in bathroom.
- Keep out of reach of children.

