

## Asmanex® HFA (Mometasone furoate with spacer and mask) Metered dose inhaler



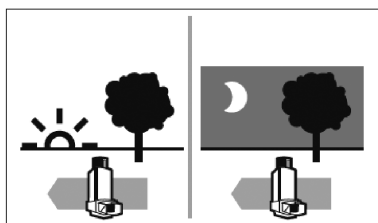
□ 100mcg

□ 200mcg

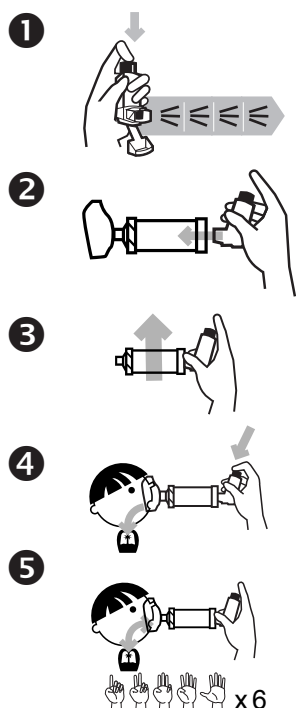
### Reason for taking this medicine:

- To help reduce and prevent swelling in the lungs
- This is a controller medicine and will not work if you are coughing, wheezing, or have shortness of breath.
- This is a medicine that must be used every day.

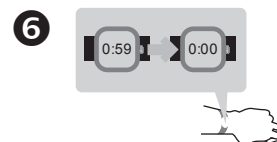
### How and when to take this medicine:



- Use a spacer and mask with this medicine.
- Use two (2) times each day – 1 or 2 puffs in the morning and 1 or 2 puffs in the evening.



1. The **first time** you use this inhaler:
  - Shake and then push down on the inhaler 4 times to prime or waste the inhaler.
  - Spray the medicine into the air.
  - The dose counter should show: 120.
2. Place the **inhaler** in the end of the spacer.
3. Shake well for 10 seconds.
4. Place mask tightly over the nose and mouth.
  - Push down on the inhaler.
  - Take slow, deep breaths.
5. Breathe in and out 6 times.
6. Wait 1 minute.
7. Repeat steps 3-5 for second puff.



### Possible side effects:



- Dry mouth
- Sore throat
- Hoarse voice
- Headache

### Call the doctor or clinic if:

- You are exposed to chickenpox or measles.
- You see blood when you spit.
- You have white spots in the mouth, called thrush.
- You have questions about this medicine or how to use it.

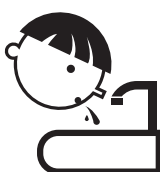
### Important things to remember:



Fill mouth with water



Swish around water



Spit out water

- Rinse your mouth out with water, brush teeth, or get a drink after every use. This can help avoid getting thrush.
- If you are suddenly having trouble breathing, use your rescue inhaler, albuterol.
- Asmanex® HFA may take a few weeks before it starts to work. -Use this medicine until your doctor tells you to stop.
- Clean plastic holder each week:
  - Asmanex® HFA has a built-in counter; do not remove the metal canister.
  - Use a cotton swab to clean the opening where the medicine sprays out the canister.
  - Wipe down the outside of the plastic holder with a dry lint-free cloth.
- Clean spacer and mask each week:
  - Soak in warm soapy water for 15 minutes.
  - Run water through it, shake off water, and set out to dry.
- Asmanex® HFA has a dose counter to tell you when the inhaler is empty.
- Refill your inhaler when the dose counter shows: "020."

### How to store:

- Store in a cool dry cabinet.
- Do not store in bathroom.
- Keep out of reach of children.

