

Advair Diskus®

(Fluticasone/
Salmeterol)

Dry powdered
disk inhaler



□ 100/50 mcg



□ 250/50 mcg



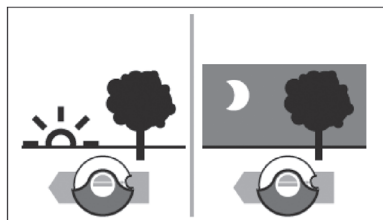
□ 500/50 mcg



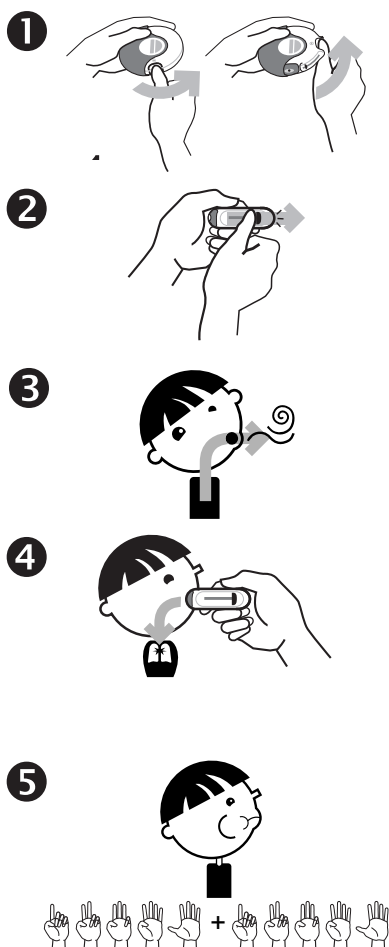
Reason for taking this medicine:

- To help reduce and prevent swelling in the lungs.
- This is a controller medicine and will not help if you are coughing, wheezing or have shortness of breath.
- This is a medicine that must be used every day.

How and when to take this medicine:



- Use 2 times each day - 1 puff in the morning and 1 puff in the evening.

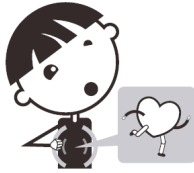


1. Hold the Advair Diskus® in one hand, and put the thumb of your other hand on the thumb grip to slide Diskus® open.
2. Place thumb on lever and push your thumb away from you as far as it will go until you hear a click.
3. Turn your head to the side and breathe out -do not breathe into the inhaler.
4. Hold the Diskus® flat.
 - Close mouth tightly around the mouthpiece.
 - Breathe in fast and deep through the mouthpiece.

HOLD LIKE A HAMBURGER – SUCK LIKE A MILKSHAKE!

 - You may not feel or taste the medicine
5. Hold your breath for 10 seconds.
6. Close the Diskus® when you are finished so it will be ready for your next dose.

Possible side effects:



- Dry mouth
- Sore throat
- Hoarse voice
- Headache
- Fast heartbeat
- Can make you hyper or cause your body to shake



Call the doctor or clinic if:

- You are exposed to chickenpox or measles.
- You can see blood when you spit.
- You have white spots in your mouth, called thrush.
- You have questions about this medicine or how to use it.

Important things to remember:



Fill mouth with water



Swish around water



Spit out water

- Rinse your mouth out with water, brush teeth, or get a drink after every use. This can help avoid thrush.
- If you suddenly have trouble breathing, use your rescue inhaler, albuterol.
- Advair® may take a few weeks before it starts to work. Use this medicine until your doctor tells you to stop.
- Wipe the mouthpiece with a dry cloth after each use.
- Advair® has a dose counter to tell you when the inhaler is empty.
- Refill your inhaler when the dose counter shows “10.”
- Throw the Diskus® away 1 month after taking it out of the foil pouch, even if you have not used it all.

How to store:



- Store in a cool dry cabinet.
- Do not store in bathroom.
- Keep out of reach of children.