

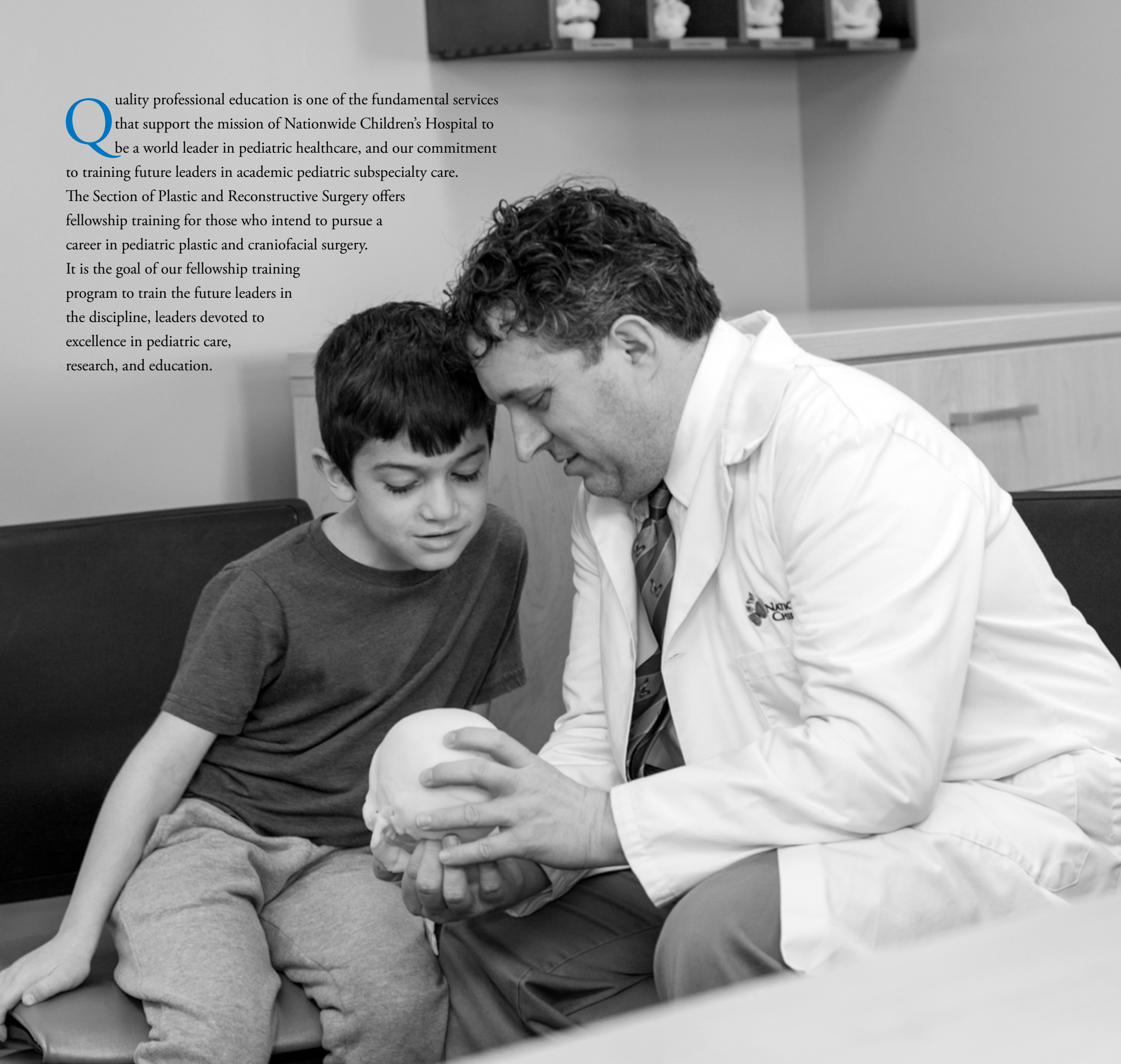


Fellowship in Pediatric Plastic and Craniofacial Surgery



**NATIONWIDE
CHILDREN'S**

When your child needs a hospital, everything matters.®



Quality professional education is one of the fundamental services that support the mission of Nationwide Children’s Hospital to be a world leader in pediatric healthcare, and our commitment to training future leaders in academic pediatric subspecialty care. The Section of Plastic and Reconstructive Surgery offers fellowship training for those who intend to pursue a career in pediatric plastic and craniofacial surgery. It is the goal of our fellowship training program to train the future leaders in the discipline, leaders devoted to excellence in pediatric care, research, and education.

.....

TABLE OF CONTENTS

About Nationwide Children’s 4

About Nationwide Children’s Section of Pediatric Plastic
and Craniofacial Reconstructive Surgery 8

 Cleft Lip and Palate Center 10

 Center for Complex Craniofacial Disorders. 10

 Craniofacial Orthodontic Treatment Program 11

 22q Center 11

 Velopharyngeal Dysfunction Program. 11

 Hemangioma and Vascular Malformation Clinic 11

 Pediatric Microsurgery and Facial Reanimation Program . . 12

 Hand and Upper Extremity Program 13

 Brachial Plexus Program. 13

 Annual Statistics. 14

Meet Our Team 15

The Pediatric Plastic and Craniofacial Surgery Fellowship . . . 16

 Clinical Training 17

 Didactic Education 18

 Research. 18

 International Experience 18

 Program Application Requirements 19

 Benefits 19

 Insurance 19

 Wellness 20

 Family. 21

About Columbus, Ohio 22

.....



ABOUT NATIONWIDE CHILDREN'S HOSPITAL

Founded in 1892, Nationwide Children's began as a local charity to serve a dozen very ill children. Throughout the following century, this tiny, community-funded mission matured into a health care system that is one of the preferred providers of pediatric health care in America. In 2019, Forbes recognized Nationwide Children's Hospital as the top-ranked children's hospital among America's best large employers.

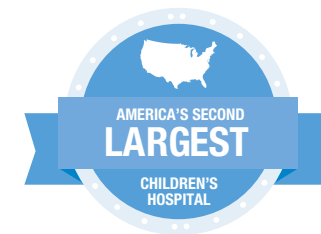
U.S. News & World Report's Rankings



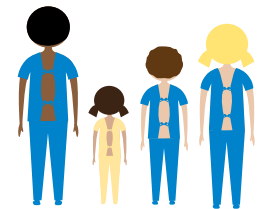
Nationwide Children's Hospital has once again made *U.S. News & World Report's* Best Children's Hospital Honor Roll, a distinction awarded to only 10 children's centers nationwide. The 2018-19 Honor Role designation makes the fifth consecutive year the hospital has received this recognition.

** Most recent data from CHA-member pediatric hospitals*

Points of Pride



MORE THAN 1.5 MILLION
PATIENT VISITS FROM
ALL 50 STATES AND
45 COUNTRIES



THREE-TIME MAGNET
designation for nursing excellence



AMERICA'S LARGEST
neonatal network and provider of
inpatient pediatric surgeries*



ZERO HERO
Committed to achieving
zero preventable harm



Provide more than
\$191 MILLION IN
CHARITY CARE
and community benefit
services annually



The Research Institute at
Nationwide Children's Hospital
IS ONE OF THE TOP 10
NIH-funded freestanding pediatric
research facilities in the U.S.



97,866 DONORS
raised more than
\$51 MILLION

Our Strategic Plan

2017-2022

JOURNEY TO BEST OUTCOMES

Through best people & programs



How we'll get there:

We aspire to create the best outcomes for children everywhere. This means families come to Nationwide Children's Hospital knowing they will get the highest quality care. It means we will reach to cure rare diseases. It means we will sequence your child's tumor to select the best care pathway. It means we will strive to make an entire population healthier, not just through their physical health, but also in their mental health. It means we will redefine the role of the children's hospital in the achievement of optimal health.

Best people: Our staff is the driving force that will make this happen. Every person has a role in this.

Best programs: Our world-class programs will be the foundation for our success

Learn more: [NationwideChildrens.org/Strategic-Plan](https://www.nationwidechildrens.org/Strategic-Plan)

Facilities

Nationwide Children's Hospital is a 12 story hospital with an additional 3.2 million square feet of clinical space. Alongside of our commitment and dedication to patient care, our campus offers an unparalleled opportunity to practice in state-of-the-art facilities that define what's possible in patient care. And, while Nationwide Children's is the second largest children's hospital in the nation, we are committed to continuing to grow to meet the needs of children everywhere. Our estimated \$730 million, 11 project, expansion plan continues as we enhance and develop infrastructure and expanded space for clinical care and advanced research.

MASTER FACILITIES II



EXPANDING CARE:

1. Hospital, building out levels two and seven
- 2a. Livingston Ambulatory Center
- 2b. Parking Garage for Livingston Ambulatory Center
3. Childcare Center, renovation
4. Livingston Park Enhancements

RESEARCH:

5. Research Building III, building out levels two and three
6. Research Building IV

INFRASTRUCTURE:

7. Faculty Office Building
8. Near East Office Building and Garage
9. Energy Plant
10. Data Center

BEHAVIORAL HEALTH PAVILION:

- 11a. Behavioral Health Pavilion
- 11b. Parking Garage for Behavioral Health



ABOUT NATIONWIDE CHILDREN'S SECTION OF PEDIATRIC PLASTIC AND CRANIOFACIAL RECONSTRUCTIVE SURGERY

Perhaps the most unique and important aspects of the specialized programs of the Section of Plastic and Reconstructive Surgery is our collaborative, interdisciplinary team approach to clinical care.

Each patient who we care for receives personalized treatment from a team of nationally recognized

specialists, dedicated to the restoration of each child's appearance and function and to meeting the child's long-term medical and psychosocial needs throughout all stages of growth and development. The members of our team work collaboratively to develop a personalized treatment plan that meets the unique needs of every child and family.



“At Nationwide Children's, the plastic surgeon is the leader of an integrated health care team for the restoration of form and function.”

— Richard E. Kirschner, MD, FAAP, FACS,
Chief of Plastic and Reconstructive Surgery

CLEFT LIP AND PALATE CENTER

Director: Richard E. Kirschner, MD, FAAP, FACS

The nationally-recognized Cleft Lip and Palate Center at Nationwide Children’s offers children and their families comprehensive care from a multidisciplinary team of experts. The team provides compassionate, coordinated care from birth through adulthood and offers a full range of services in plastic surgery, oral and maxillofacial surgery, otolaryngology, dentistry and orthodontics, speech-language pathology, infant-feeding, psychology and more.

Our highly-experienced and collaborative team is one of the largest in the nation and has been recognized as an approved team by the American Cleft Palate-Craniofacial Association. While serving patients and families to provide the very best clinical outcomes and quality of life, the Nationwide Children’s team also serves as a world leader in professional education and in quality improvement and research. As a part of its mission, the team routinely provides free surgical care to infants and children abroad.

CENTER FOR COMPLEX CRANIOFACIAL DISORDERS

Director: Gregory D. Pearson, MD

Congenital and acquired craniofacial differences can impact a child’s physical, social, and emotional development. The Center for Complex Craniofacial Disorders team of experts has provided comprehensive and compassionate care for thousands of children from birth to young adulthood. Our team offers highly-specialized care and access to the kind of technology that can only be found at a nationally-recognized hospital like Nationwide Children’s to assure that every child has the best possible quality of life.

Using a variety of surgical approaches, including minimally invasive techniques and distraction osteogenesis, we care for a wide variety of conditions, including trauma, craniosynostosis, hemifacial microsomia, midfacial hypoplasia, jaw abnormalities, hypertelorbitism, facial paralysis, and microtia. Patients are managed by a dedicated team of specialists that develop a coordinated care plan tailored to each child’s individual needs.

CRANIOFACIAL ORTHODONTIC TREATMENT PROGRAM

The Craniofacial Orthodontic Treatment Program offers a compassionate approach to orthodontic care provided by experts who understand the unique aspects of dental development in children with craniofacial anomalies. Pre-surgical treatment often begins in infancy and continues throughout adolescence and into early adulthood. Children are treated in our state-of-the-art facility with cutting-edge technology and the latest innovations in orthodontics in order to ensure that they receive the best care and the best outcomes.

Specialists in the Craniofacial Orthodontic Treatment Program are part of our multidisciplinary teams dedicated to providing personalized, complete care to children with cleft lip and palate and other craniofacial anomalies.

22Q CENTER

Co-directors:
Adriane L. Baylis, PhD, CCC-SLP, and
Richard E. Kirschner, MD, FAAP, FACS

The internationally-recognized 22q Center at Nationwide Children’s Hospital provides children and their families access to a multidisciplinary team of expert clinicians who understand these special needs. The 22q Center team provides individualized diagnostic and management services in genetics, cardiology, plastic and reconstructive surgery, speech and language pathology, developmental pediatrics, immunology, neuropsychology, behavioral health, audiology, otolaryngology, endocrinology, hematology, neurology, psychology and psychiatry.

Our multidisciplinary team works together with families of children diagnosed with 22q11.2 deletion syndrome to provide diagnosis and early intervention services in order to optimize care and provide the best outcomes for every child, allowing each child to reach their full potential.

VELOPHARYNGEAL DYSFUNCTION PROGRAM

Director: Adriane L. Baylis, PhD, CCC-SLP

The Velopharyngeal Dysfunction (VPD) Program provides care from a multidisciplinary team of experts who specialize in the evaluation and treatment of patients with hypernasality and related speech disorders. We understand that the successful management of VPD requires precision in diagnosis and individualized of treatment, as well as a family-centered approach to care.

Our program includes professionals in speech-language pathology, plastic surgery, otolaryngology, genetics, dentistry/orthodontics and psychology. The VPD Program is an integral part of Cleft Lip and Palate Center, the Center for Complex Craniofacial Disorders and the 22q Center at Nationwide Children’s. Clinical investigators from the VPD Program are recognized as national leaders in their field and have record of federally-funded research focused on speech disorders and patient outcomes.

HEMANGIOMA AND VASCULAR MALFORMATION CLINIC

Director: Ibrahim Khansa, MD

The Hemangioma and Vascular Malformation Clinic (HVMC) brings together a multidisciplinary team of pediatric specialists to provide comprehensive, coordinated, state-of-the-art care to patients with vascular tumors and malformations. A wide range of advanced surgical and nonsurgical approaches are offered to meet the diverse needs of our patients. These include pharmacologic management, surgery, and minimally invasive diagnostic and therapeutic procedures, such as sclerotherapy and embolization. Care is provided in a supportive, family-centered environment.



PEDIATRIC MICROSURGERY AND FACIAL REANIMATION PROGRAM

Nationwide Children’s Hospital is one of the few programs in the country offering a collaborative, multidisciplinary team of experts in pediatric microsurgery. Surgeons employ specialized techniques to perform intricate microsurgery procedures to restore form and function to children affected by trauma, cancer and congenital differences.

Our experts employ specialized microsurgical techniques to treat a variety of conditions including:

- Facial nerve palsy that is acquired or from congenital conditions such as Moebius syndrome, hemifacial macrosomia or other causes

- Extremity conditions that may require free functional muscle transplantation or toe to hand transfers
- Traumatic injuries requiring reconstruction
- Oncologic reconstruction after tumor resection
- Targeted muscle reinnervation
- Vascular malformations requiring complex reconstruction
- Severe burn injuries requiring complex reconstruction



HAND AND UPPER EXTREMITY PROGRAM

Children born with hand or upper extremity differences, as well as those who sustain an injury from birth or trauma, face unique challenges. The Hand and Upper Extremity Program is one of the few in the United States in which patients and their families benefit from a comprehensive approach to upper extremity care that combines the expertise of physicians in plastic and reconstructive surgery, orthopedic surgery, and rehabilitation medicine.

Common conditions we treat include:

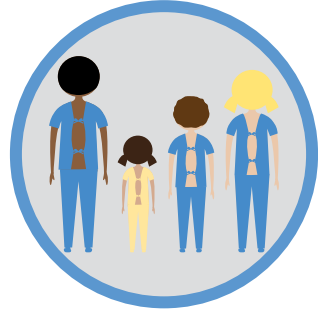
- **Congenital Differences:** hypoplasia, polydactyly, syndactyly, overgrowth, club hands, complex congenital hands
- **Trauma:** fractures, nerve damage, tendon damage, burns
- **Cerebral Palsy:** spastic upper extremity conditions

- **Microvascular Reconstruction:** nerve injuries, soft tissue conditions, congenital hand differences, reconstruction after tumor resection
- **Sports:** fractures, over-use, arthroscopic

BRACHIAL PLEXUS PROGRAM

Director: Kim Bjorklund, MD

Brachial plexus injuries can have a lifelong impact on children and their families. Our Brachial Plexus Program is staffed by a team of experts dedicated to the evaluation and management of brachial plexus and other peripheral nerve injuries from birth through young adulthood. Each child who we care for receives coordinated, comprehensive treatment designed to achieve the best outcomes.



OUTPATIENT VISITS

Cleft and Craniofacial
2,185 VISITS

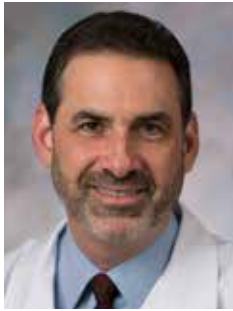
General Plastic Surgery
4,148 VISITS

Craniofacial Orthodontics
2,482 VISITS



SURGICAL PROCEDURES
1,420 CASES

MEET OUR TEAM



Richard Kirschner, MD, FAAP, FACS



Gregory Pearson, MD, FAAP, FACS



Ibrahim Khansa, MD



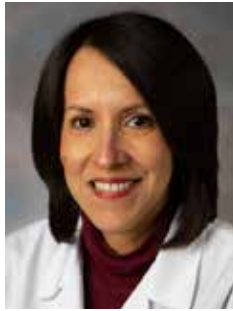
Kim Bjorklund, MD



Adriane Baylis, PhD, CCC-SLP



Canice Crerand, PhD



Ana Mercado, DMD, PhD



Kara Morris, DDS



Andrea Brun, CPNP-PC



Courtney Hall, CPNP-PC



Laura Merrell, FNP



Holly Conley, RN



Amanda Smith, RN

Based on recent annual statistics.



THE PEDIATRIC PLASTIC AND CRANIOFACIAL SURGERY FELLOWSHIP

Clinical Training

The Fellowship in Pediatric Plastic and Craniofacial Surgery is a 12-month training program that is designed to prepare trainees to care for patients across the broad spectrum of pediatric reconstructive surgery. Trainees will be exposed to clinical management and operative techniques in general pediatric plastic surgery as well as to those related to the interdisciplinary centers within the Section of Plastic and Reconstructive Surgery. A second year of fellowship training is available for those seeking additional experience in surgical management, research, quality improvement, and global health.

Our team provides comprehensive team care for all pediatric plastic surgical conditions, ranging from the simple to the most complex, including:

- Benign and malignant skin and other soft tissue lesions
- Facial trauma

- Scars
- Hemangiomas and vascular malformations
- Gynecomastia and developmental breast anomalies
- Congenital and traumatic hand anomalies
- Brachial plexus injuries
- Microsurgery, including facial reanimation, soft tissue coverage of fractures, and limb salvage
- Cleft lip and palate
- Velopharyngeal dysfunction (hypernasal speech)
- 22q11.2 deletion syndrome
- Complex craniofacial disorders
- Maxillary and mandibular anomalies
- Congenital and acquired anomalies of the ears, nose, and lips
- Malocclusion and other orthodontic needs



Didactic Education

In addition to hands-on clinical training, fellows will be provided with extensive didactic opportunities at Nationwide Children’s, including clinical research seminars, core competency lectures, journal club and medical leadership training. Additionally, fellows will attend the weekly educational conferences of The Ohio State University Department of Plastic Surgery.

Research

At Nationwide Children’s, we not only serve the needs of patients today – we are also on the front lines of clinical research, searching from tomorrow’s best treatments and cures. The Research Institute at Nationwide Children’s is one of the largest pediatric research centers in the United States and is ranked in the top 10 for National Institutes of Health funding among freestanding children’s hospitals.

The Section of Plastic and Reconstructive Surgery is home to numerous clinical research programs, including several federally-funded initiatives. Fellows will participate in the design and execution of departmental research projects in collaboration with faculty and staff. They will also facilitate quality improvement projects to support best practices and outcomes for patients treated in the Section of Plastic and Reconstructive Surgery.

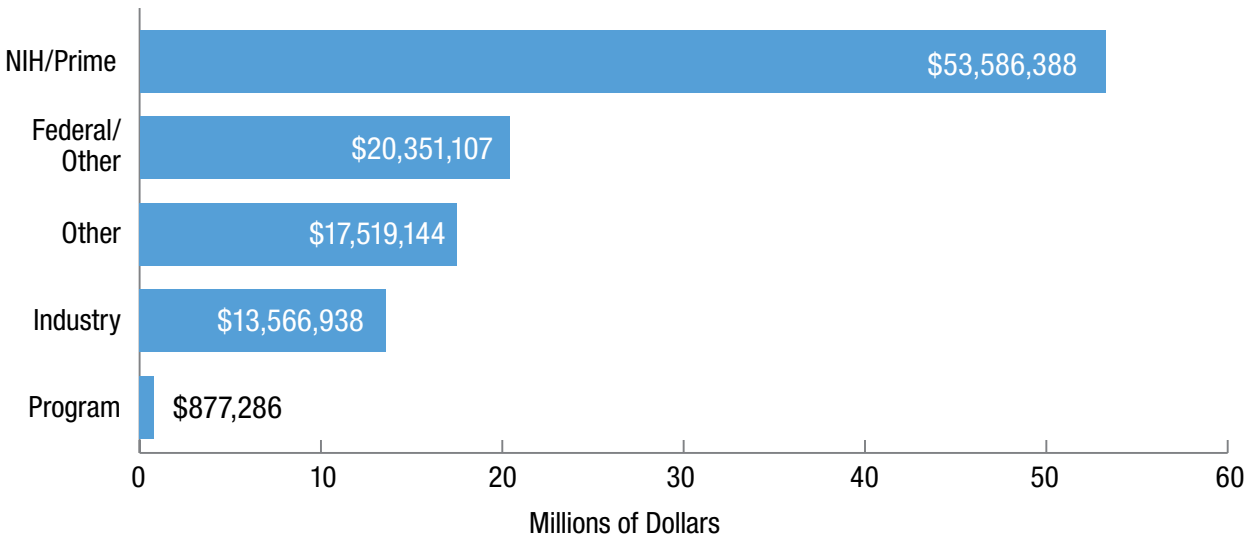


International Experience

Fellows will have the opportunity to travel with the Nationwide Children’s team to provide cleft and craniofacial care abroad, providing an invaluable educational experiences in both surgical care and international outreach. An international travel grant program provides fellows with additional opportunities for international experience during their training. Interested applicants may enroll in Nationwide Children’s Global Health Certificate Program.

THE RESEARCH INSTITUTE AT NATIONWIDE CHILDREN’S AWARDS

Total: \$105.9 million (\$105,900,863)



Program Application Requirements

Eligible physicians will have completed an ACGME-accredited plastic surgery residency program and will have been certified board-eligible by the American Board of Plastic Surgery. Select international candidates will also be considered.

Two-Step Application

- Register for the San Francisco Match at sfmatch.org. Applicant registration begins in January. Please note that although registration is open up until the match deadline, applicants are encouraged to register as early as possible to allow time for application and interviews.
- Complete application through the American Society of Craniofacial Surgeons at ascfs.org/fellowship.cgi

Both SF Match and ASCFS applications must be completed in their entirety before candidate will be considered for an interview.



BENEFITS

Fellows training in the graduate medical education program sponsored by Nationwide Children’s Hospital are employees of the hospital and as such are eligible the same benefits that other full time staff receive – with the exception of paid time off, which is outlined below.

Competitive Salary – Nationwide Children’s offers salaries competitive with other hospitals in the region, including The Ohio State University Medical Center.

Time Off – Fellows are provided a total of 30 days paid time off.

- 15 days for vacation and holiday coverage includes the following holidays recognized by the hospital: Jan 1, Memorial Day, July 4, Labor Day, Thanksgiving Day and December 25.
- 10 days paid medical leave is provided during the course of the program. Family leave is provided in accordance with federal and state laws.
- 5 days professional leave

Funding for Relocation: Incoming fellows who are relocating from greater than 50 miles outside Columbus, may receive some funding for moving expenses. Relocation expenses may be taxed (dependent upon state and federal laws).

Professional Conference funding: Fellows in good standing are encouraged to attend professional conferences. Programs receive funding annually for fellows to attend and present at conferences. Funds may be used toward conference fees, hotel, travel, and meals. Final decisions on conference funds are made by the Program Director.

Paid memberships: Some professional organizations are covered by the program.

Insurance

Medical Insurance – Employees may enroll in one of two comprehensive medical plans administered through Aetna: The Health Savings Account, or Health Reimbursement Account. Benefits in both plans include, but are not limited to, the following: preventative care, inpatient/outpatient services,

therapy services, home health care, mental health services and more. Coverage commences on the date of hire or the date of eligibility. The cost of both plans is shared by Nationwide Children’s Hospital and the employee.

Prescription Drug Coverage – Employees enrolled in one of the two medical plans will automatically receive prescription drug coverage administered through CVS Caremark.

Dental Insurance – Employees may enroll in a dental insurance plan administered through Delta Dental. Participants will be covered by two of the nation’s largest networks of participating dentists- the Delta Dental PPO and Premier networks. The plan includes preventative care covered at 100% and coinsurance benefits for basic and major services. The plan also offers orthodontia coverage for dependents up to age 19. The cost of the plan is shared by Nationwide Children’s Hospital and the employee.

Benefits Plus Pre-Tax Program – Deductions through the Nationwide Children’s Hospital payroll system for medical and dental insurance are made

on a “pre-tax” rather than an “after-tax” basis. This means that these deduction amounts are not subject to state, federal, or social security taxes.

Vision Insurance – Employees enrolled in one of the three medical plans will have basic vision coverage, which includes an annual eye exam. Employees may choose to enroll in one of three supplemental vision plans administered through Vision Service Plan (VSP).

Wellness

All employees are encouraged to participate in a variety of wellness programs offered through Nationwide Children’s Hospital. Join our exercise specialist who teaches a variety of group fitness classes such as yoga, toning and step aerobics. These classes are free to all employees.

On-site Fitness Center – Employees may utilize the on-site fitness center, open 24 hours a day and staffed 20 hours per week by a personal trainer. The center is equipped with a variety of aerobic equipment, weight machines and free weights. Membership fees are charged on a bi-weekly basis through payroll deduction.



Employee Assistance Program – Nationwide Children’s offers all employees, regardless of benefit status, eight free counseling sessions through Matrix. Employees may use Matrix for confidential counseling for legal and financial resources, elder care issues, stress and more. These services are strictly confidential and are available 24 hours a day.

Employee Health Services – All employees can utilize a wide variety of services available through Employee Health. On-site nursing care is available for staff providing services such as health screenings, immunizations and consultations for health-related concerns.

Smoke Free Environment – All employees are prohibited from smoking and/or using tobacco related products while at work or during their shift. Smoking by visitors and patients is also prohibited in all facilities and on the property of Nationwide Children’s Hospital.

Family

Child Care Services – An on-site Child Care Center is available for full and part-time employees’ children ages eight-weeks to five-years. The center is open from 6:30 a.m. to 6:30 p.m. Monday through Friday. A consultation service is provided through Action for Children to assist employees in locating child care specific to their needs.



One of the most gratifying results of our focus is the collaborative spirit that pervades this hospital. As the nation’s leader for pediatric health care, we are the top institution in the country for growing amazing talent.



ABOUT COLUMBUS, OHIO

The New York Times listed Columbus, Ohio as one of the top places to visit in 2019 because of its innovative urban transportation options, riverfront green space, and dining and shopping in unique areas such as the North Market, Short North Arts District, and the Italian and German Villages. With a population of 780,000, Columbus is the 15th largest city in the United States. The city is perfect for active lifestyles, having recently invested \$20 million to develop a growing system of bike and fitness trails that connect the suburbs and river trails to downtown's \$44 million riverfront park system restoration. Columbus is recognized for its neighborhoods ranging from historic to hopping, for its fabulous casual and fine dining venues, shopping experiences, museums and more. If you are a sports enthusiast, there is no offseason in the Columbus area with a

wide variety of events and venues. Columbus is diverse and home to one of the largest young professional networks in the country. There are several young professional organizations that regularly hold networking events, social and philanthropic activities. One of our city's proud achievements is the diversity of its economic base. Because of the diversity of educational and employment opportunities in Columbus, there are many options for a fellow's spouse or partner.

Visit www.nytimes.com/interactive/2019/travel/places-to-visit.html, www.Columbus.gov, www.ExperienceColumbus.com and ColumbusRegion.com to learn more about Columbus.



South Campus Gateway / Photo Credit: South Campus Gateway

For more information about the Pediatric Plastic and Craniofacial Surgery Fellowship visit us at
NationwideChildrens.org/Plastic-Surgery-Fellowship,

or contact:

Program Coordinator

Plastic and Reconstructive Surgery
700 Children's Drive | Columbus, OH 43205

(614) 722-3887

prs@nationwidechildrens.org



When your child needs a hospital, everything matters.®