

Nationwide Children's

PAS 2026 Presenter Schedule



Friday - April 24, 2026

8:00 a.m. – 2:00 p.m.

Challenges in Neonatal Gastroenterology: Hot Topics at Daily Rounds

Session: PAS Ticketed Event

Location: Convention Center: 106 West



10:00 a.m. – 11:00 a.m.

The 'GERD' controversy in the NICU Infant: From definitions to clinical trials

Sudarshan Jadcherla, MD

Director, Neonatal and Infant Feeding Disorders Program



11:30 a.m. – 12:00 p.m.

Tiny livers, big threats: Infectious agents in neonatal hepatitis

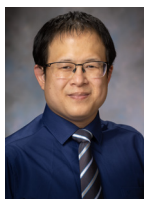
Pablo Sanchez, MD

Principal Investigator, Center for Perinatal Research

The Society for Pediatric Sedation - Sedation Provider Course

Session: PAS Ticketed Event

Location: Convention Center: 257 B East



10:00 a.m. – 11:00 a.m.

SIM scenario 2

Jonathan Chang, MD

Emergency Medicine Physician

4:00 p.m. – 5:30 p.m.

Cluster, Step, Platform, Oh My!! Innovative Trial designs and how to choose appropriate primary outcomes for neonatal trials.

Session: Hot Topic Symposia

Location: Convention Center: 107 West



4:10 p.m. – 4:30 p.m.

CORD-CHD- Use of an Ordinal Outcome in a pragmatic trial

Carl Backes, MD

Principal Investigator, Center for Perinatal Research

Vertical Transmission of Vaccine-Preventable Infections: Deja Vu All Over Again?

Session: State of the Art Plenary

Location: Convention Center: 210 AB West



4:00 p.m. – 4:30 p.m.

Measles: A Return with a Vengeance!

Pablo Sanchez, MD

Principal Investigator, Center for Perinatal Research

Writing for QI Publication: Interactive Workshop on Practice, Pitfalls and Perspectives (with Journal Editors!)

Session: Workshop

Location: Convention Center: 254 B East



Alex Kemper, MD

Division Chief, Primary Care Pediatrics

Poster Sessions – Friday, April 24, 2026

Treatment Outcomes of Invasive Infections due to *Staphylococcus aureus* in the Neonatal Intensive Care Unit (NICU): Can Antibiotic Duration be Shortened?

Jackson Gamer, DO

Establishing a Center of Excellence in Cerebral Palsy Care: Models of Care Delivery Within Cerebral Palsy Research Network Sites

Laurie Glader, MD

The Development and Initial Validation of the Caregiver Priorities for Comorbidities & Health Evaluation Checklist (CPCHECKList©)

Laurie Glader, MD

Incidence of Pulmonary Hypertension Vasodilator Treatment in Established Bronchopulmonary Dysplasia

Kaitlyn Hipp, MD

Association of Time-to-Liberation from Respiratory Support with
Gastrostomy Tube Placement in Infants with Bronchopulmonary Dysplasia
Gozdem Kayki, MD

Grade 3 Bronchopulmonary Dysplasia Mechanical Ventilation Weaning
Classifications
Matthew Kielt, MD

Comparing Diuretic Response Patterns in Critically Ill Neonates with AKI
Benjamin T. Russell, MD

Geo-Mapping Pediatric Disaster Preparedness: Identifying Gaps Among
Families of Children with Special Health Care Needs
Yae Sul Jeong, MD, MS

Association of Childhood Blood Pressure Dipping with Target Organ Injury
Andrew Tran, MD, MPH, MS

Saturday - April 25, 2026

8:00 a.m. – 9:00 a.m.

Hot Topics in Pediatric Screening

Session: Debate/Pro-Con Discussion

Location: Convention Center: 102 West



8:05 a.m. – 8:17 a.m.

The case for universal lipid screening

Alex Kemper, MD

Division Chief, Primary Care Pediatrics

9:45 a.m. – 10:45 a.m.

The 'How' to Developing Clinical, Research, Advocacy, and Education Careers in Pediatric Nephrology: Inspiring the Next Generation

Session: Networking Breakout

Location: Convention Center: 102 West



John David Spencer, MD

Division Chief, Nephrology & Hypertension

11:00 a.m. – 12:30 p.m.

APA Combined SIG: Urgent Care and Teaching in Community | Urgent Care and Community Teaching: Bedside Teaching Excellence - Educating Learners and Engaging Families

Session: APA SIG

Location: Convention Center 257 A East



11:20 a.m. – 11:40 a.m.

Didactic; Small Group Session: Expectations and Feedback

Luciana Berg, MD

Associate Division Chief, Urgent Care

PAS SIG: Adolescent Health

Session: PAS SIG

Location: Convention Center: 254 A East



11:35 a.m. - 11:45 a.m.

Digital Partner Violence Screening Among Adolescents in School-Based Health Settings

Dianne Mancheno Alvarez, DO

Resident Physician

2:00 p.m. - 3:30 p.m.

APA Combined SIG: Injury Control SIG and Social Determinates of Health (SDoH) | From EDs to Neighborhoods: Integrating Social Determinants into Child Safety Strategies

Session: APA SIG

Location: Convention Center 253 C East



2:00 p.m. – 2:15 p.m.

Connecting SDOH and Pediatric Injuries: The Kendi- Macy Injury Equity Framework

Leah Middelberg, MD

Emergency Medicine Physician



2:15 p.m. – 2:30 p.m.

Ingestions, Social Determinants, & Equity

Christopher E. Gaw, MD, MPH, MBE

Emergency Medicine Physician & Faculty for the Center for Injury Research and Policy

5:45 p.m. – 7:45 p.m.

Advancements in Idiopathic Nephrotic Syndrome: Updates on Clinical Trial Data and Management

Session: Industry Sponsored Symposium

Location: Omni Boston Hotel at the Seaport: Ensemble

Ballroom B (Level 2)



William Smoyer, MD

Director, Center for Clinical and Translational Research

Poster Sessions – Saturday, April 25, 2026

Comparative effectiveness of corticosteroids for acute asthma treatment in the pediatric emergency department

Adjoa A. Andoh, MD

A Qualitative Analysis of Victims of Child Maltreatment Diagnosed with Torture: A Single Center Study

Luke I. Hartman, MD

Assessing the Role of Fellowship Training in Pediatric Urgent Care: A Multi-Stakeholder Survey

Aaron J. Maki, MD, PhD

Regulation of Antimicrobial Peptide Expression in Human Bladder Epithelial Cells by Transcription Factor Silencing

Mrina Murali

Impact of Respiratory Tract Infections on Feeding Milestones and Aerodigestive Outcomes in Premature Infants

Elizabeth Ramos Orosco, MD

Leveraging Emergency Care to Advance HIV Prevention in Youth: Outcomes of a PrEP Navigation Protocol

Katherine E. Redden, MPH

Improving Transcranial Doppler Rates Among Medicaid-Insured Patients with Sickle Cell Anemia; A Collaborative Quality Improvement Project

Greg Stewart, MD

Sunday - April 26, 2026

8:00 a.m. – 9:30 a.m.

Moving Upstream: Creating Targeted Interventions to Address Structural Racism in Clinical Settings

Session: Workshop

Location: Convention Center: 254 A East



*Elizabeth Bonachea, MD
Vice Chair, Faculty Development
Director, Fellowship Education*

Technology 1: AI in Neonatology - New Frontiers in Monitoring, Risk Prediction, and Research Methods

Session: Oral Abstracts

Location: Convention Center: 204 West



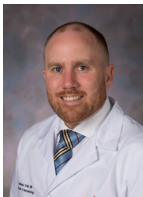
*Bimal Chaudhari, MD, MPH
Neonatologist
Principal Investigator, Steve and Cindy Rasmussen Institute
for Genomic Medicine*

11:30 a.m. – 1:00 p.m.

Controversies and Considerations for Tracheostomy in Bronchopulmonary Dysplasia

Session: Workshop

Location: Convention Center: 258 C East



*Matthew Kielt, MD
Neonatologist
Associate Faculty, Center for Perinatal Research*

From Interest to Interview: A Roadmap for Pediatric Subspecialty Fellowship Applications

Session: Workshop

Location: Convention Center: 253 B East



*Melissa Argraves, MD, MEd
Rheumatologist*

Implementation Science to Advance Pediatric Hypertension Care

Session: Panel Discussions

Location: Convention Center: 104 AB West



*Andrew Tran, MD, MPH
Director, Preventive Cardiology*

1:00 p.m. – 2:15 p.m.

Milk Club: The Rise in the Use of Donor Human Milk in the NICU, Well-Newborn, and Outpatient Settings

Session: Clubs in Convention Center

Location: Convention Center: 109 West



*Sarah Keim, PhD
Principal Investigator, Center for
Biobehavioral Health*

5:30 p.m. – 7:30 p.m.

Networking Breakout: Artificial Intelligence in Neonatology

Session: Networking Breakout

Location: Omni Boston Hotel at the Seaport: Ensemble
Ballroom A (Level 2)



Shama Patel, MD, MPH
Neonatologist & Clinical Informaticist

Poster Sessions – Sunday, April 26, 2026

Characterization of Occult Coronary Artery Dilation in Kawasaki Disease: A Distinct Phenotype within AHA-Defined Normal Category

Radwa Abozeid, MD, MSc

Emergency Department Return Rates for Pediatric Patients with Positive Sepsis Screening at Index Visit

Sarah Allen, MD

Muscular VSD Device Complications: Literature Review and Possible Implications for Echocardiographic Follow-Up

Thomas C. Casto, MD

Short-Term Costs in Catheter vs Surgical-Based PDA Closure with Long-Term Considerations: A Literature Review

Phillip S. Cheng, MD

Left Ventricular Dysfunction in Patients with Sickle Cell Disease: Evaluating Genotypic Differences and Effects of Hydroxyurea in Youths

Chukwuemeka Igwe, MD, MPH

Predictors of Gastrostomy Tube (G-tube) Risk at Discharge in Infants with Chronic Tube Feeding and Development of a Gastrostomy Risk Calculator

Sudarshan Jadcherla, MD, FRCP, DCH, AGAF

Small but Not the Same: Small for Gestational Age (SGA) vs. Intrauterine Growth Restriction (IUGR) in Congenital Cytomegalovirus (cCMV) Infection

Zachery S. Lewald

Digital Partner Violence Screening Among Adolescents in School-Based Health Settings

Dianne Mancheno Alvarez, DO

Evaluation of the Withdrawal Assessment Tool – Alpha 2 Agonist for
Iatrogenic Withdrawal Syndrome in Infants

Randy Moore, MD

Pediatric Rural Interfacility Transfers by Emergency Medical Services

Abigail Parro, MD

Unraveling the Difference Between Congenital and Postnatal Infections

Caroline Morris, DO

Predicting the Probability of BPD or Death at 36-weeks Postmenstrual
Age in Infants with Patent Ductus Arteriosus at Birth using Clinical and
Echocardiographic Predictors: A large prospective cohort

Jonathan L. Slaughter, MD, MPH

Decreasing Testing of Febrile Newborns in the Pediatric Urgent Care Prior to
Transfer to the Emergency Department

Jerry M. Stultz, MD, MBI

Monday - April 27, 2026

10:00 a.m. – 11:30 a.m.

Feeding Knowledge: Leveling Up Interdisciplinary NICU-Specific Lactation Education

Session: Workshop

Location: Convention Center: 258 B East



Joanie Randle, MSN, MSHS

Clinical Research Coordinator, Center for Perinatal Research

1:00 p.m. – 2:30 p.m.

Neonatal Hemodynamics and Cardiovascular Medicine 2

Session: Oral Abstract

Location: Convention Center: Grand Ballroom West (Level 3)



Jonathan Slaughter, MD, MPH

Neonatologist

Principal Investigator, Center for Perinatal Research

Contract Clarity: Spotting Red and Green Flags in Academic Pediatric Negotiations

Session: Workshop

Location: Convention Center: 258 B East



Katherine Bline, MD

Critical Care Medicine Physician

Principal Investigator, Center for Microbe and Immunity Research

Poster Sessions – Monday, April 27, 2026

QI Project to Reduce Unnecessary Use of Ophthalmic Antibiotics for Acute Conjunctivitis in the Pediatric Urgent Care Setting

Hayat Al Tabosh, MD, FAAP

A Pilot Study Examining Parent Engagement and Novel High Resolution Manometry (HRM) Methods on Aerodigestive and Economic Outcomes in Infants

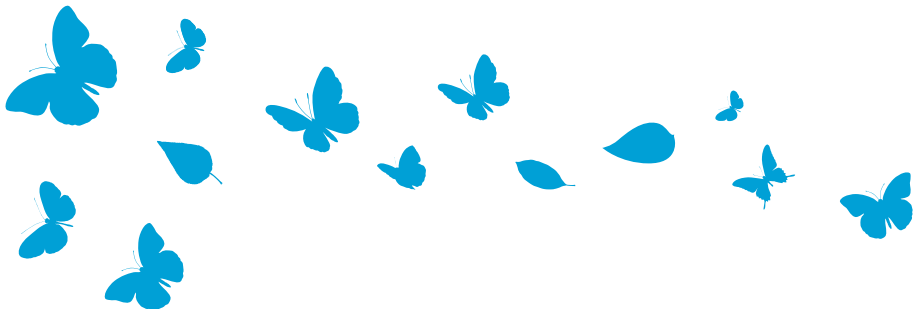
Sudarshan Jadcherla, MD, FRCP, DCH, AGAF

Evaluating the Transition from Finnegan Scoring to Eat, Sleep, Console Across Nursery and NICU Settings for Neonatal Opioid Withdrawal Syndrome

Robert J. Nadler, MD

Understanding Attrition in Pediatric Weight Management: Insights from Visit Patterns

Stephen Toone, BS





Visit [NationwideChildrens.org/PAS](https://www.NationwideChildrens.org/PAS) or scan the QR code to explore more:

- Alumni & Friends Reception details
- Tiny Baby Collaborative Meeting (sponsored by Nationwide Children's)
- Connect and collaborate with our team
- Latest clinical highlights and research
- Training and education opportunities

