

Inclusion Criteria

Any patient who presents with concerns for abnormal uterine bleeding

Exclusion Criteria

- Pregnancy
- Isolated post-coital bleeding
- Trauma

Definition & Diagnosis

Differential Diagnosis

Concern for Bleeding Disorder

Medications

Concern for heavy menstrual bleeding

Pregnancy test positive?

Yes

Off Pathway
Facilitate transfer to adult facility

No

Signs of shock?

Yes

Transfer to ED

No

Initial labs:

- CBC with differential
- STI testing (GC/Chlamydia/Trich) if sexually active

Assess bleeding severity

Mild

- Slightly prolonged menses
- Slightly more frequent cycle
- Increased flow
- Hgb normal

Mild Bleeding Discharge

Moderate

Menses lasting >7days
or
cycle frequency < 3weeks
AND
Hgb 10-11 g/dL

Moderate Bleeding Discharge

Severe

Menstrual cycles with heavy bleeding that disrupt activities of daily living
AND
Hgb <10g/dL

**Hgb ≤ 7 g/dL
and/or
symptomatic anemia?**

No

Severe Bleeding Discharge

Yes

Severe Bleeding Transfer to ED

Definition & Diagnosis

In clinical practice, the diagnosis, evaluation and treatment of heavy bleeding are based upon “patient experience”, the female’s personal assessment of blood loss and its impact on her life.

Matteson et al. Non-surgical management of heavy menstrual bleeding: a systematic review and practice guidelines.
Obstet Gynecol 2013;121:632-643

General Guidelines for Consideration

Normal menstrual bleeding:

- Cycle length 21-45 days
- Flow length < 7 days
- Product (pad or tampon) use \leq 6 products in 24 hours

Heavy Menstrual bleeding:

Excessive menstrual loss that interferes with the patient’s physical, emotional, social and material quality of life and can occur alone or in combination with other symptoms

*F. Haamid et al. Heavy Menstrual Bleeding in Adolescents. NASPAG Committee Opinion.
J Pediatr Adolesc Gynecol. 2017;30:335-340*

[Return to Algorithm](#)

Focused History for Evaluation of Heavy Menstrual Bleeding

- **Bleeding pattern**
 - Frequency of changing pads or tampons
 - Presence of clots > size of quarter
 - Effect on quality of life
- **Symptoms of anemia**
 - Shortness of breath
 - Acute increase in exercise intolerance
 - Lightheadedness
 - Syncope
- **Sexual and reproductive history**
 - Menstrual history
 - Possibility of current pregnancy
 - Contraceptives use
 - Sexually transmitted infections
- **Associated symptoms**
 - Fever
 - Chills
 - Pelvic pressure or pain
 - Bowel or bladder dysfunction
 - Vaginal discharge or odor
- **Symptoms associated with systemic cause**
 - Obesity
 - PCOS
 - Hypothyroidism
 - Hyperprolactinemia,
 - Hypothalamic or adrenal disorder
- **Chronic medical illness**
 - Inherited bleeding disorders (coagulopathy, blood dyscrasias, platelet function disorders)
 - Systemic lupus erythematosus or other connective tissue diseases
 - Liver disease, renal disease, cardiovascular disease
- **Medications**
 - Hormonal contraceptives
 - Anticoagulants
- **Family history**
 - Coagulation or thromboembolic disorders
 - Hormone-sensitive cancers

Estrogen contraindications

- **Relative contraindication:**
 - First degree relative with history of PE or DVT
- **Absolute contraindications:**
 - Current or past blood clot
 - Current or past migraine + aura
 - Hypertension (Systolic > 140, diastolic > 90)
 - Systemic lupus erythematosus with + lupus anticoagulant
 - Thrombotic mutations: prothrombin mutation, factor V Leiden
 - Protein C, Protein S and antithrombin deficiencies
 - Estrogen-dependent tumors
 - Hepatic dysfunction or disease

Adapted from:

F. Haamid et al. Heavy Menstrual Bleeding in Adolescents. NASPAG Committee Opinion. J Pediatr Adolesc Gynecol. 2017;30:335-340

[Return to Algorithm](#)

Differential Diagnoses

- **Endocrine**
 - Anovulatory bleeding
 - Polycystic ovarian syndrome
 - Thyroid disease
- **Bleeding disorders**
 - Von Willebrand disease
 - Platelet dysfunction
 - Thrombocytopenia
 - Clotting factor deficiency
- **Pregnancy**
 - Abortion
 - Ectopic pregnancy
 - Gestational trophoblastic disease
- **Infection**
 - Sexually transmitted diseases – Gonorrhea/Chlamydia/Trichomonas
 - Adenomyosis
- **Uterine**
 - Myoma
 - Intrauterine device
 - Polyp
 - Cancer
- **Medication**
 - Depot medroxyprogesterone
 - Anticoagulants
- **Other**
 - Trauma
 - Foreign body
 - Hemorrhagic ovarian cysts

F. Haamid et al. Heavy Menstrual Bleeding in Adolescents. NASPAG Committee Opinion. J Pediatr Adolesc Gynecol. 2017;30:335-340

[Return to Algorithm](#)

Concern for Bleeding Disorder

Laboratory evaluation for a bleeding disorder occurs during follow-up with Adolescent Medicine

Among adolescents with heavy menstrual bleeding, up to 20% are reported to have an underlying bleeding disorder with the following suggested frequencies:

- Von Willebrand disease 5-36%
- Platelet function defects 2-44%
- Thrombocytopenia 13-20%
- Clotting factor deficiencies 8-9%

Possible bleeding disorder if any of the following:

- Saturating a product faster than every 2 hours
- Clots bigger than a quarter
- Needing 2 products at once
- Frequent “accidents” or leaking through protection
- “Flooding” sensation
- Previous or current diagnosis of anemia
- Excessive bleeding with tooth extraction, surgery
- Family history of diagnosed bleeding disorder

F. Haamid et al. Heavy Menstrual Bleeding in Adolescents. NASPAG Committee Opinion. J Pediatr Adolsc Gynecol. 2017;30:335-340

[Return to Algorithm](#)

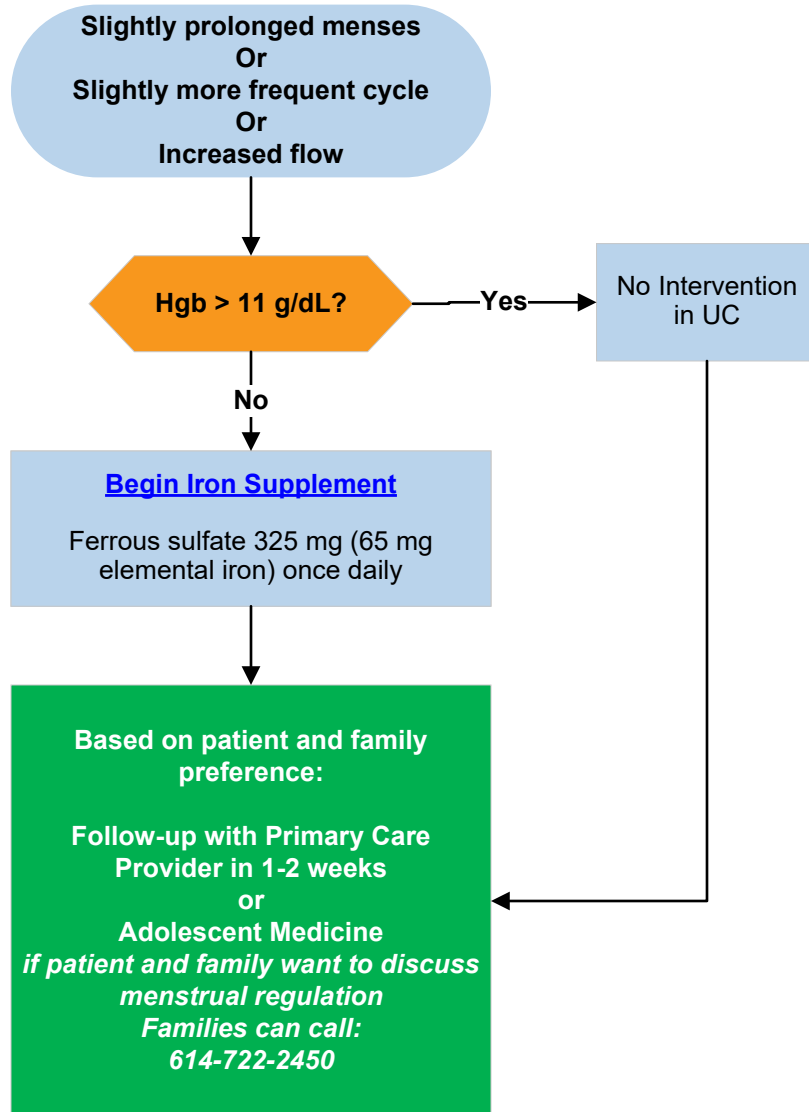
Symptomatic Anemia with AUB

Symptoms of symptomatic anemia with AUB include:

- Shortness of breath
- Sustained tachycardia
- Difficulty with activities of daily living
- Orthostatic hypotension (*fall of systolic BP over 20 mm Hg or fall in diastolic BP over 10 mm Hg within 3 minutes of standing*)

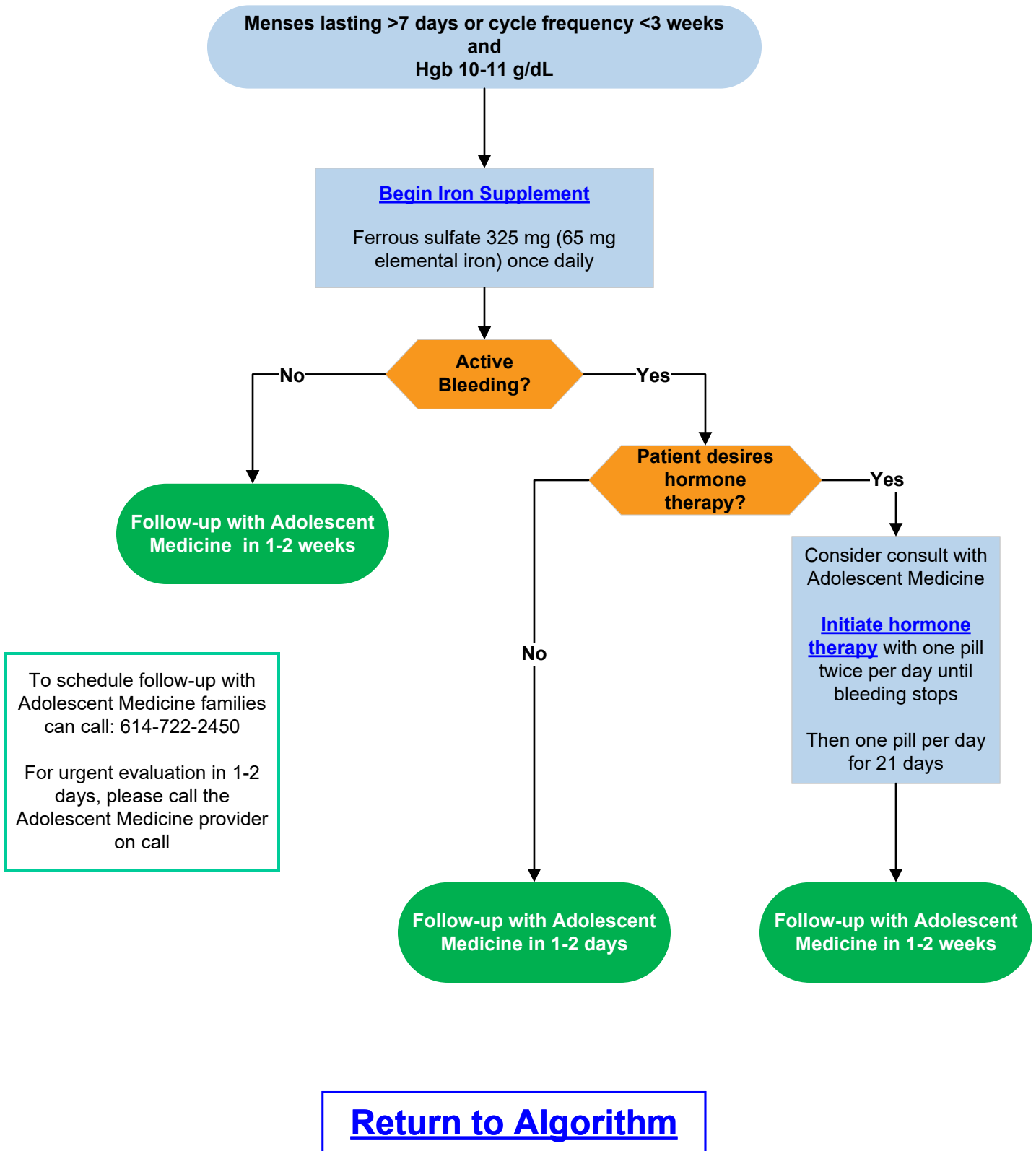
[Return to Algorithm](#)

Mild Bleeding Discharge Plan

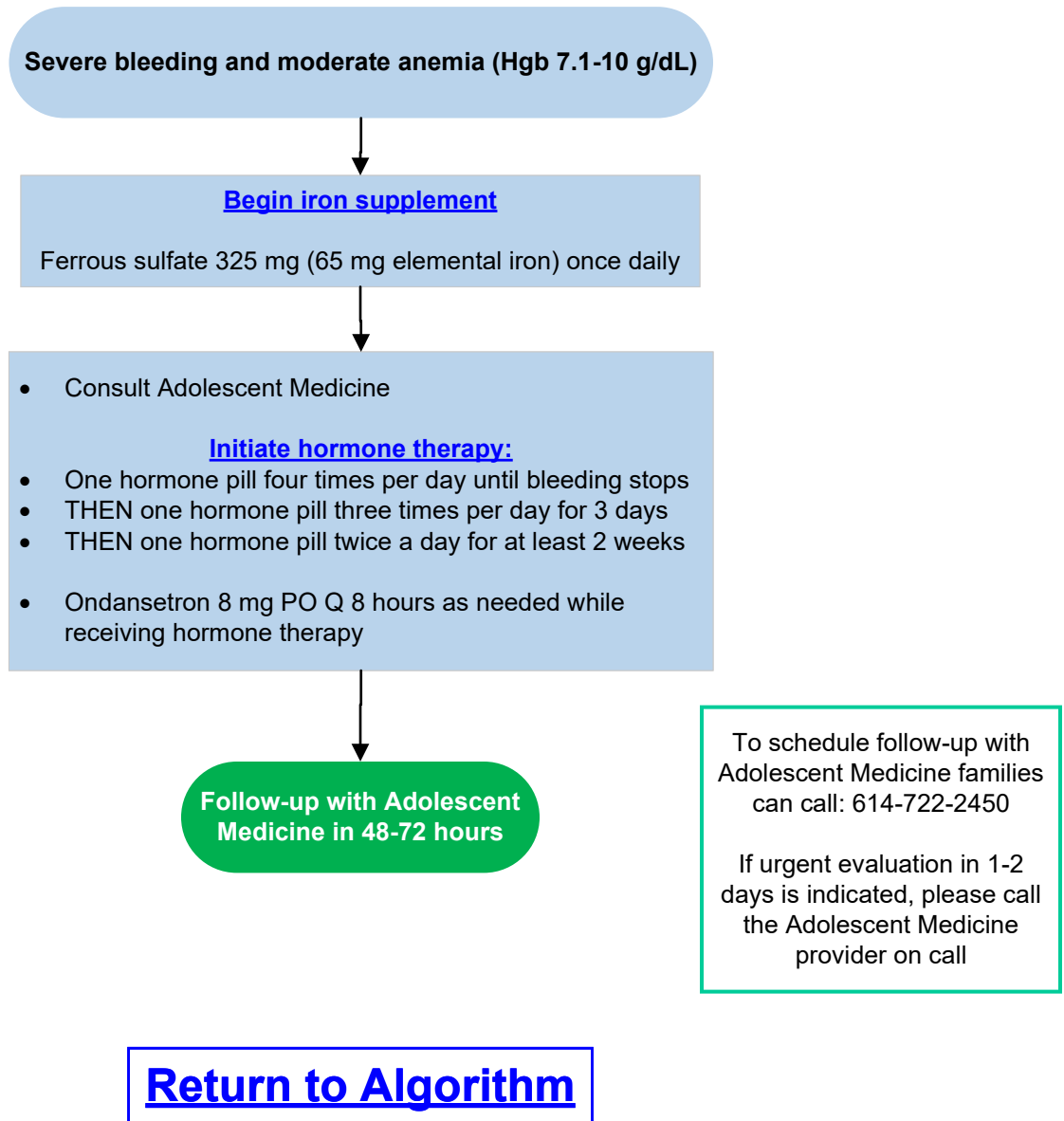


[Return to Algorithm](#)

Moderate Bleeding Discharge Plan



Severe Bleeding Discharge Plan



Severe Bleeding Transfer Plan

**Severe bleeding AND severe anemia
(Hgb \leq 7g/dL or symptomatic) and/or any of the following:**

- Persistent tachycardia or hypotension
- Ongoing brisk blood loss (changing pads/tampons every 1-2 hours)
- **Symptomatic anemia**
- Psychosocial concerns

Transfer to ED

[Return to Algorithm](#)

Medications

Monophasic oral contraceptive pill (OCP) containing 30-50 mcg of estrogen:

- Norgestimate 0.25 mg/ethinyl estradiol 35 mcg (Sprintec, Mononessa, Ortho Cyclen)
- Norgestrel 0.3 mg/ethinyl estradiol 30mcg (**Lo/Ovral***, Low-Ogestrel, Cryselle)
- Levonorgestrel 0.15 mg/ethinyl estradiol 30mcg (Nordette, Levlen, Levora, Portia)

All are equally efficacious and well tolerated

**Used most often*

Estrogen contraindications

- **Relative contraindication (okay to use initially to control bleeding):**
 - First degree relative with history of PE or DVT
- **Absolute contraindications:**
 - Current or past blood clot
 - Current or past migraine + aura
 - Hypertension (Systolic > 140, diastolic > 90)
 - Systemic lupus erythematosus with + lupus anticoagulant
 - Thrombotic mutations: prothrombin mutation, factor V Leiden
 - Protein C, Protein S and antithrombin deficiencies
 - Estrogen-dependent tumors
 - Hepatic dysfunction or disease

Progestin-only alternatives:

- Norethindrone acetate (Aygestin) 5 mg
- Medroxyprogesterone acetate (Provera) 10 mg

Counsel patient that these are not birth control pills and not FDA approved for contraception

Estrogen-containing medications and Progestin-only alternatives can be tapered the same way:

- **Moderate bleeding**
 - Initiate hormone therapy with one pill twice per day until bleeding stops
 - Then one pill per day for 21 days
- **Severe bleeding:**
 - One hormone pill four times per day for 2-4 days (duration to be determined at follow-up)
 - THEN one hormone pill three times per day for 3 days
 - THEN one hormone pill twice a day for at least 2 weeks

Oral Iron Supplementation:

Ferrous sulfate 325 mg (65 mg elemental iron) once daily for patients who are ≥ 35 kg
(Otherwise 3-6 mg/kg of elemental iron once daily with a max of 100 mg elemental iron daily if < 35 kg)

[Return to Algorithm](#)

Metrics

Pathway Goal

To provide a standardized approach to evaluation and treatment of abnormal uterine bleeding in non-pregnant patients.

Quality Measures

Outcome Metrics

- Iron supplementation provided for patients with abnormal uterine bleeding and hemoglobin < 12 g/dL

Process Metrics

- Pathway Utilization
- Pathway visualization

[Return to Algorithm](#)

References

1. Haamid F, Sass AE, Dietrich JE. Heavy menstrual bleeding in adolescents. *J Pediatr Adolesc Gynecol*. 2017;30(3):335-340. doi:10.1016/j.jpag.2017.01.002. Epub 2017 Jan 17. Erratum in: *J Pediatr Adolesc Gynecol*. 2017;30(6):665. PMID: 28108214.
2. Huguelet PS, Buyers EM, Lange-Liss JH, Scott SM. Treatment of acute abnormal uterine bleeding in adolescents: what are providers doing in various specialties? *J Pediatr Adolesc Gynecol*. 2016;29(3):286-291. doi:10.1016/j.jpag.2015.10.021. Epub 2015 Nov 25. PMID: 26612118.
3. Wouk N, Helton M. Abnormal uterine bleeding in premenopausal women. *Am Fam Physician*. 2019;99(7):435-443. PMID: 30932448.
4. Yaşa C, Güngör Uğurlucan F. Approach to abnormal uterine bleeding in adolescents. *J Clin Res Pediatr Endocrinol*. 2020;12(Suppl 1):1-6. doi:10.4274/jcrpe.galenos.2019.2019.S0200. PMID: 32041387; PMCID: PMC7053441.
5. Matteson KA, Rahn DD, Wheeler TL, et al. Non-surgical management of heavy menstrual bleeding: a systematic review and practice guidelines. *Obstet Gynecol*. 2013;121:632-643.
6. Bennett AR, Gray SH. What to do when she's bleeding through: the recognition, evaluation, and management of abnormal uterine bleeding in adolescents. *Curr Opin Pediatr*. 2014;26(4):413-419. doi:10.1097/MOP.000000000000121. PMID: 25007322.
7. Kanagasabai P, Suganthini P, et al. Interventions to improve access to care for abnormal uterine bleeding: a systematic scoping review. *Int J Gynecol Obstet*. 2023;160(1):38-48.
8. Close AG, et al. Improving the evaluation and management of abnormal uterine bleeding in female adolescents presenting for emergency care. *J Pediatr Adolesc Gynecol*. 2019;32(2):128-134.
9. Mullins ES, Miller RJ, Kowalczyk Mullins TL. Abnormal uterine bleeding in adolescent women. *Curr Pediatr Rep*. 2018;6:123-131.
10. Levy-Zauberman Y, et al. Update on the management of abnormal uterine bleeding. *J Gynecol Obstet Hum Reprod*. 2017;46(8):613-622.
11. O'Brien SH. Evaluation and management of heavy menstrual bleeding in adolescents: the role of the hematologist. *Hematology Am Soc Hematol Educ Program*. 2018;2018(1):390-398. doi:10.1182/asheducation-2018.1.390
12. Mansour D, Hofman A, Gemzell-Danielsson K. A review of clinical guidelines on the management of iron deficiency and iron deficiency anemia in women with heavy menstrual bleeding. *Adv Ther*. 2021;38:201-225.

[Return to Algorithm](#)

Pathway Team & Process

Content Development Team:

Leaders:

Urgent Care:

Luciana Berg, MD, FAAP
Cynthia Zimm, MD, MBA, FAAP

Emergency Medicine:

Aarti Gaglani, MD

Members:

This pathway was adapted from the Emergency Department version of the Abnormal Uterine Bleeding pathway. Please see the ED Abnormal Uterine Bleeding Clinical Pathway document for the original list of pathway members.

Clinical Pathways Program:

Medical Director – Emergency Medicine:

Aarti Gaglani, MD

Medical Director – Clinical Informatics & Emergency Medicine:

Laura Rust, MD, MPH

Business & Development Manager:

Rekha Voruganti, MBOE, LSSBB

Program Coordinators:

Tahje Brown, MBA

Clinical Pathway Approved:

Medical Director – Associate Chief Medical Officer, Center for Clinical Excellence:

Ryan Bode, MD, MBOE

Advisory Committee: *April, 2026*

Origination Date: *April, 2026*

Next Revision Date: *April, 2031*

Clinical Pathway Development

This clinical pathway was developed using the process described in the NCH Clinical Pathway Development Manual Version 6, 2022. Clinical Pathways at Nationwide Children's Hospital (NCH) are standards which provide general guidance to clinicians. Patient choice, clinician judgment, and other relevant factors in diagnosing and treating patients remain central to the selection of diagnostic tests and therapy. The ordering provider assumes all risks associated with care decisions. NCH assumes no responsibility for any adverse consequences, errors, or omissions that may arise from the use or reliance on these guidelines. NCH's clinical pathways are reviewed periodically for consistency with new evidence; however, new developments may not be represented, and NCH makes no guarantees, representations, or warranties with respect to the information provided in this clinical pathway.

Copyright © 2023. Nationwide Children's Hospital. All rights reserved. No part of this document may be reproduced, displayed, modified, or distributed in any form without the express written permission of Nationwide Children's Hospital.

**For more information about our pathways and program please contact:
ClinicalPathways@NationwideChildrens.org**

[Return to Algorithm](#)