



# Fast Facts 2025



**NATIONWIDE  
CHILDREN'S®**

*When your child needs a hospital, everything matters.*





## FAST FACTS

*Our mission. Our vision.*

*Our locations. Our leadership.*

*Data reflects year ending December 31, 2024*

## TABLE OF CONTENTS

About Nationwide Children's Hospital .....	4
At a Glance .....	6
Making Health Happen Everywhere .....	9
Financial Review.....	10
Hospital Visits.....	12
Behavioral Health .....	14
Top Diagnoses .....	15
Specialty Clinics .....	16
Community Wellness .....	17
Subsidiaries .....	19
Hospital Leadership .....	20
Regional Hospital Affiliations.....	21
Locations .....	22
Connect With Us.....	24

Find these Fast Facts online by visiting  
**NationwideChildrens.org** and  
searching Fast Facts.

# ABOUT NATIONWIDE CHILDREN'S HOSPITAL

*Chartered: 1892*

## MISSION

Nationwide Children's Hospital is committed to best outcomes and health equity for all children, ensuring every child has access to the best care regardless of their ability to pay.

Upon this fundamental belief, Nationwide Children's is committed to providing the highest quality:

- Care for patients and whole child wellness
- Advocacy for children and families
- Research discoveries
- Education of patients, families, team members and the community

## VISION

Leading the transformation of child health so children everywhere achieve best outcomes.

## VALUES

As One Team where *Everyone* Matters:

### Do the right thing

- We are committed to health equity for all children
- We always act with integrity, kindness, empathy and honesty
- We are inclusive and respectful, embracing the uniqueness and differences of each individual

### Prioritize Quality and Safety

- We put patients and families at the center of every decision
- We create a safe day every day
- We communicate clearly and completely
- We routinely seek input from others and always support our colleagues

### Promote health and well-being

- We balance work and life demands
- We generate optimism and energy in one another
- We advance our health, and the health of our community

### Are agile and innovative

- We embrace and lead positive change
- We fuel a streamlined environment and an entrepreneurial spirit
- We generate and share new knowledge and ideas

### Get results

- We're accountable (we do what we say we'll do)
- We're determined (we get the desired result)
- We're committed to best outcomes and constant improvement
- We leverage our diverse strengths and talents



# OUR STRATEGIC PLAN



In 2021, Nationwide Children’s Hospital announced the most ambitious strategic plan in our history: A five-year \$3.3 billion commitment to transform health outcomes for all children.

What makes this plan unique is its distinctive approach to improving the health of the whole child through:

- World-Class Care & Cutting-Edge Research: Integrating talent, quality and technology to achieve best outcomes
- Health Equity & Population Health: Ensuring all children have the opportunity to reach their full potential
- Behavioral & Mental Health Care: Expanding and sharing an innovative model of care
- Genomics Research & Personalized Medicine: Revolutionizing the next frontier of pediatric health

“Empowered by tremendous community support, our successes in clinical care, behavioral health, population health, and research innovations aligned with our focus on the whole child and our mission to provide care regardless of ability to pay, uniquely positions us to change the way pediatric health care is delivered as a national model. We are ready to do even more.”

*Tim Robinson, CEO*

**Learn more:** Visit [NationwideChildrens.org](https://www.NationwideChildrens.org) and search Strategic Plan.

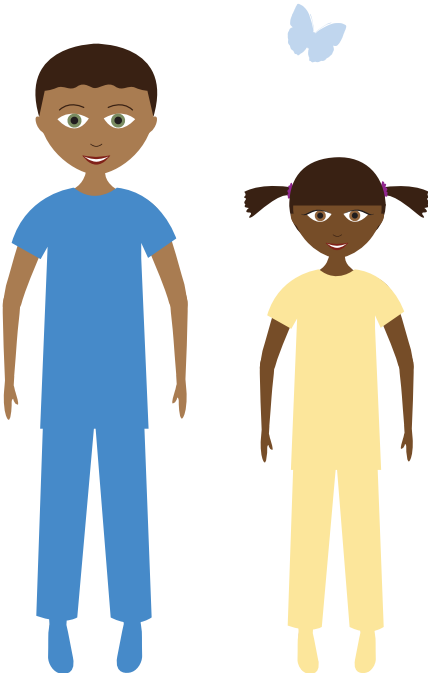
AT A GLANCE

PROVIDE MORE THAN \$277 MILLION IN CHARITY CARE AND COMMUNITY BENEFIT SERVICES ANNUALLY\*\*\*



BEST OF THE BEST

Nationwide Children’s has been named by *U.S. News* as tied for the number one pediatric hospital in Ohio and the Midwest.



MORE THAN 1.9 MILLION  
PATIENT VISITS IN 2024

PATIENTS CAME FROM ALL 50 STATES  
AND 49 FOREIGN COUNTRIES IN 2024

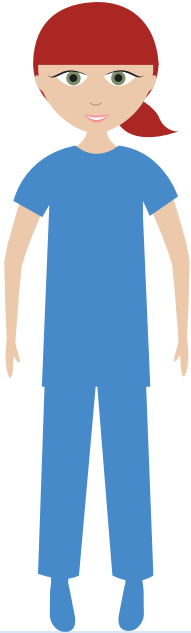


47,660 DONORS CONTRIBUTED  
MORE THAN \$61M

# Zero Hero™

*Create a safe day. Every day.*

**COMMITTED TO  
QUALITY AND SAFETY**



**FIVE-TIME MAGNET**  
designation for  
nursing excellence



Named to Forbes' 2024  
**AMERICA'S BEST  
EMPLOYERS**



**AMERICA'S LARGEST  
NEONATAL NETWORK**  
AND PROVIDER OF INPATIENT  
PEDIATRIC SURGERIES\*\*



THE RESEARCH INSTITUTE AT NATIONWIDE  
CHILDREN'S HOSPITAL IS RANKING  
**AMONG THE TOP 10**  
NIH-FUNDED FREESTANDING PEDIATRIC  
RESEARCH FACILITIES IN THE U.S.

\*\* Most recent data from CHA-member pediatric hospitals based on number of staffed beds  
\*\*Most recent data from CHA-member pediatric hospitals, based on largest number of NICU beds and highest number of inpatient surgeries  
\*\*\*Based on 2024 information

**U.S. NEWS & WORLD REPORT'S RANKING**

Nationwide Children’s Hospital has once again made *U.S. News & World Report’s* 2024-2025 Best Children’s Hospital Honor Roll, marking the 11th consecutive year of receiving this recognition. Nationwide Children’s is also ranked among the nation’s best in all 11 specialties, with seven ranked in the top 10.



**STAFFING**

**TOTAL EMPLOYEES: 16,557**

**Total PAA Physicians:** 560

**The Research Institute Employees:** 1,956

**Medical Staff:** 1,712

**The Research Institute Investigators:** 268\*

*\*Includes faculty from the Abigail Wexner Research Institute and faculty from Nationwide Children’s Hospital with \$50,000 or more in research funding support.*



# MAKING HEALTH HAPPEN EVERYWHERE

Our One Team values are a cornerstone at Nationwide Children’s Hospital and advancing them is an essential part of the hospital’s work. We express these values by supporting all patients and employees regardless of who they are or where they’re from, and we pursue Best Outcomes for all children in our community and beyond. From our founding more than 130 years ago, Nationwide Children’s has been committed to ensuring the best outcomes for every child. Being champions for all children is in our DNA.

## REACHING CHILDREN IN UNDERSERVED AREAS

Nationwide Children’s has been working across the state to bring health services to children where they spend most of their time -- at school. Nationwide Children’s provides consultations, trainings and technical assistance to support the expansion of school-based health services across Ohio, particularly in rural areas. Their work has impacted 38 counties. They’ve collaborated with more than 60 school partners and 30 health care partners and providers. Recently, we were the convener of a historic grant, the \$62 million Appalachian Children’s Health Initiative, to expand school health services, which will reach 375,000 youth, families and community members.



■ Nationwide Children’s school-based locations

SQUARE FOOTAGE (NET) SPACE

Main Campus

Inpatient: 1,563,577

Outpatient: 681,415

Research: 851,510

Education & Support Areas: 756,916

Parking Structures: 2,451,908

Owned Sites: 514,736

(Surrounding Main Campus)

Owned Sites: 431,043

(Outlying Outpatient and Support Buildings)

Lease Sites: (Care Centers, Laboratory Services, Heart Centers and Support Areas. Includes OHM & OHN Toledo) – 631,377

Leased School Sites: 34 locations

Leased Physician Partnerships: 12 locations

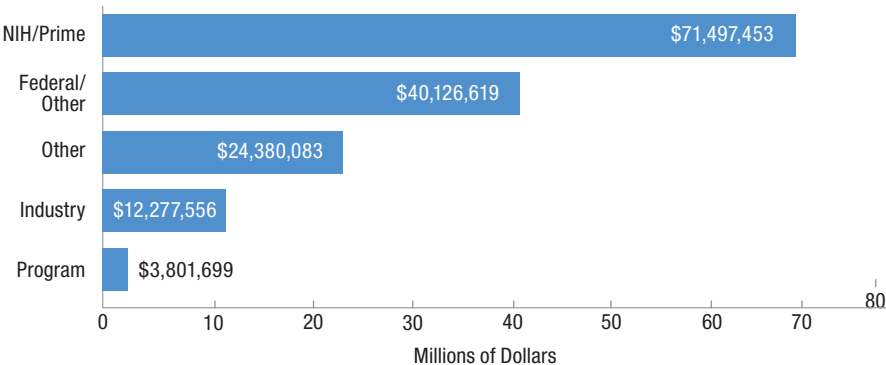
Inpatient Statistics	Nationwide Children's Columbus	Nationwide Children's - Toledo
Inpatient Discharges	20,023	1,780
Average Length of Stay (Days)	8.8	5.4
Licensed Beds	696	76
Patient Days	175,515	9,566

*\*As of October 1, 2024, all Ohio hospitals are licensed by the state. Prior to then, hospitals registered beds with the Ohio Department of Health. With this change, offsite NICU beds are now licensed under Nationwide Children's and no longer consider leased. OhioHealth, St. Ann's and OSU stats are included in totals*

FINANCIAL REVIEW

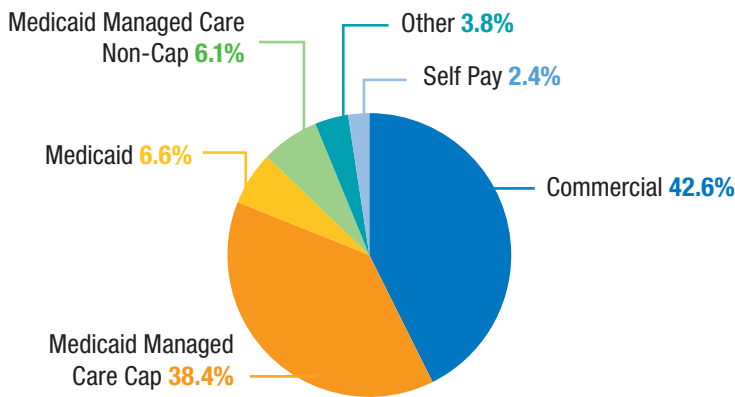
THE RESEARCH INSTITUTE AT NATIONWIDE CHILDREN'S AWARDS

2024 Total: \$152,083,410



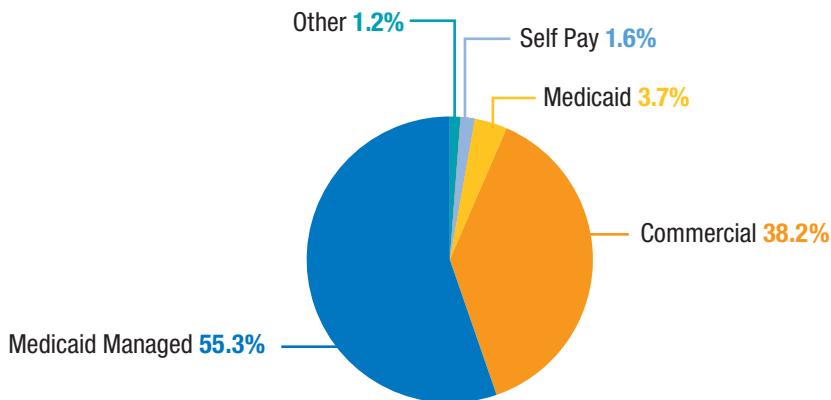
**GROSS PATIENT REVENUE (COLUMBUS): \$4,343,606,807**

**PAYOR MIX**



**GROSS PATIENT REVENUE (TOLEDO): \$260,341,989**

**PAYOR MIX**





# HOSPITAL VISITS

## OUTPATIENT STATISTICS - NATIONWIDE CHILDREN'S COLUMBUS

	2024
Observation	10,972
Outpatient in a Bed	8,105
Emergency Department	97,173
Psychiatric Crisis Department	7,696
Urgent Care (including Main, Dublin, Westerville, East Columbus, Canal Winchester, Marysville and Hilliard)	164,511
On-site Outpatient Diagnostics / Therapy	317,693
Off-site Outpatient Diagnostics / Therapy	472,210
Primary Care Clinics (includes on-site and off-site)	242,022
Specialty Care Clinics (includes on-site, off-site and Dental)	474,716
Outpatient Surgery (Main OR, Surgery Center, WSC, Dental, GI, Procedure Center)	30,564
Care Connections (School Health and Mobile Units)	21,438

## OUTPATIENT STATISTICS- NATIONWIDE CHILDREN'S - TOLEDO

	2024
Observation	588
Outpatient in a Bed	701
Specialty Clinics	33,773
Primary Care Clinics	56,245
Diagnostics Therapeutics	32,269

Total Visits to Nationwide Children’s Hospital (both Columbus and Toledo, excludes Home Health)	1,990,699
---	-----------

2024 SURGICAL CASES\*

Location Name	Inpatient	Outpatient	Total
Main OR**	10,529	7,271	17,689
Livingston Avenue Surgery Center/ Surgery Center Main Campus	44	5,877	5,921
Westerville Surgery Center	0	6,574	6,574
Dental Surgery Location	3	2,789	2,792
GI Surgery	84	2,239	2,323
Procedure Center	768	2,082	2,850
Interventional Radiology	993	581	1,574
<b>Total Surgery Cases</b>	<b>12,421</b>	<b>27,413</b>	<b>39,834</b>

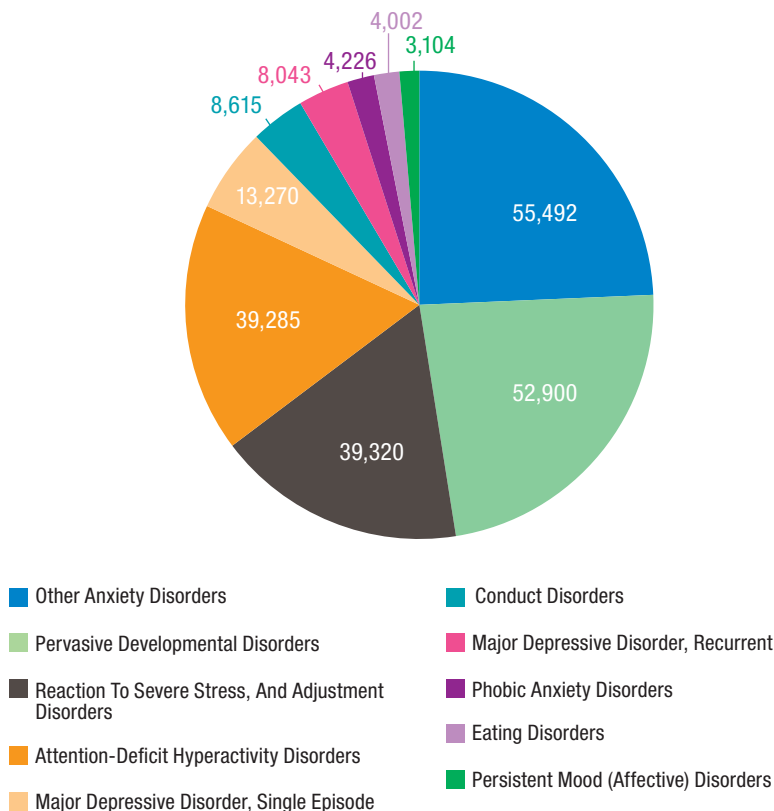
\*2024 surgeries do not include sedated radiology procedures  
\*\*Excludes all bedside procedures, MRIs done in Radiology and Other depts



# BEHAVIORAL HEALTH SERVICES

Number of licensed Inpatient Psych Beds: 38  
Staffed Youth Crisis Stabilization Unit Beds: 16  
Inpatient Psych and Youth Crisis Stabilization Unit Discharges: 2,334  
Inpatient Psych and Youth Crisis Stabilization Unit Patient Days: 14,859  
Psychiatric Crisis Department Visits: 7,695  
Intermediate Level of Care Visits (*IOP/PHP, Complex Behavior, not including IHBT/EIBI*): 8,758  
Ambulatory Visits (excluding Intermediate Level of Care): 277,469

## TOP DIAGNOSES FOR BEHAVIORAL HEALTH AMBULATORY SERVICES



## **NATIONWIDE CHILDREN'S HOSPITAL HOMECARE**

### **Central Ohio**

Infusion Doses Dispensed: 186,082

Intermittent Skilled Nursing Visits: 5,930

Skilled Therapy Visits: 16,174

Private Duty Nursing Hours: 61,365

Hospice Patient Days: 5,641

Palliative Care Visits: 2,909

Patient Home Supply Deliveries: 29,483

### **Toledo**

Skilled Nursing Visits: 1,808

Skilled Therapy Visits: 4,312

## **TOP 10 INPATIENT DIAGNOSES**

### **TOP 10 INPATIENT DIAGNOSES - COLUMBUS**

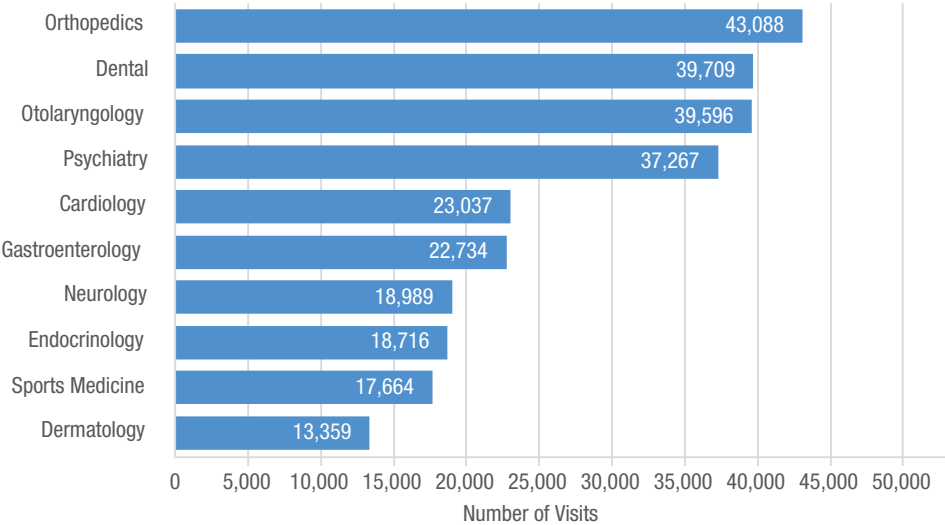
1. Disorders of Newborn Related to Short Gestation and Low Birth Weight, Not Elsewhere Classified
2. Acute Bronchiolitis
3. Asthma
4. Bacterial Pneumonia, Not Elsewhere Classified
5. Respiratory Distress Of Newborn
6. Volume Depletion
7. Encounter for Other Aftercare and Medical Care
8. Epilepsy And Recurrent Seizures
9. Sickle-Cell Disorders
10. Unspecified Severe Protein-Calorie Malnutrition

### **TOP 10 INPATIENT DIAGNOSES - TOLEDO**

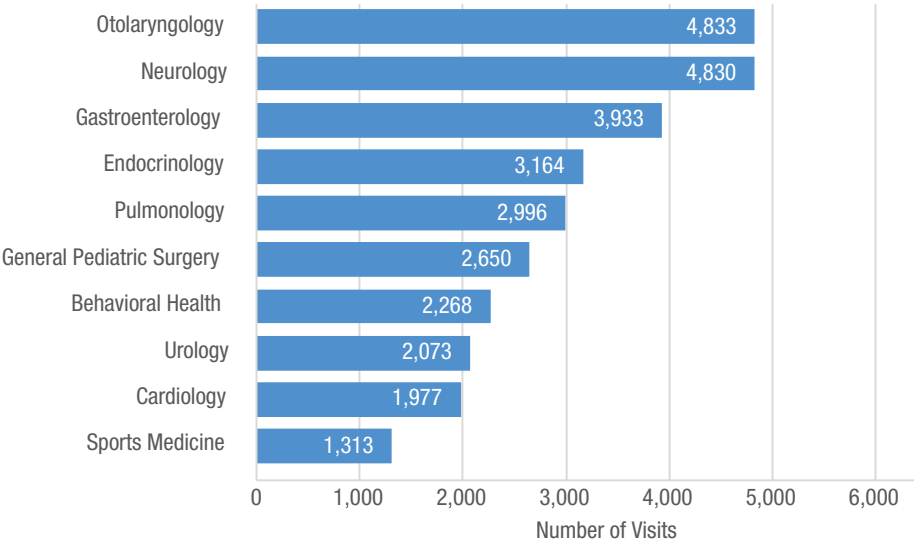
1. Respiratory Distress of Newborn
2. Other Respiratory Conditions Originating In The Perinatal Period
3. Respiratory Failure, Not Elsewhere Classified
4. Asthma
5. Acute Bronchiolitis
6. Disorders Of Newborn Related To Short Gestation And Low Birth Weight, Not Elsewhere Classified
7. Epilepsy and Recurrent Seizures
8. Volume Depletion
9. Convulsions, Not Elsewhere Classified
10. Acute Appendicitis

# HIGHEST VOLUME MEDICAL SUB-SPECIALTY CARE CLINICS

## Nationwide Children's Columbus



## Nationwide Children's - Toledo



# COMMUNITY WELLNESS

## HEALTHY NEIGHBORHOODS HEALTHY FAMILIES (HNHF)

A child's overall health and well-being is impacted by many factors, like where they live and their access to health care, fresh foods and economic opportunities. That's why we created the Healthy Neighborhoods Healthy Families initiative with our community partners, dedicated to reaching children and families with the services they need to live healthier lives.



**More than 2,875 participants**  
attended 12 PlayStreets events  
that promote outdoor play and  
community building



**More than 1,500 participants  
and six community partners**  
attended the second annual  
Linden Fall Fest



**1,000 free federal tax filings**  
prepared, resulting in more than \$1.7  
million in total federal and state  
refunds accessed by clients



**More than 302 residents**  
of zip codes 43205, 43206, 43207,  
43224 and 43211 (South Side and Linden)  
employed by Nationwide Children's



**More than 133 units**  
improved through rehabilitations, home  
improvement grants and new builds



**97% of children**  
were prepared for kindergarten after  
participating in a readiness program

**Learn more: [NationwideChildrens.org/HNHF](https://NationwideChildrens.org/HNHF)**

## PARTNERS FOR KIDS™ (PFK)

Partners For Kids (PFK) is one of the largest nonprofit programs of its kind in the United States, serving as the link between families, health care providers and Ohio's Medicaid system. This partnership allows children to get the high-quality care they need when they need it and where they need it.

- Number of “at-risk” payor agreements: 7 (AmeriHealth Caritas, Anthem, Buckeye Health Plan, CareSource, Humana, Molina, United Healthcare Community Plan)
- Service Area: 47 counties
- Members: 470,000
- Members Enrolled in Care Coordination: 10,398
- Number of providers in PFK network: 2,360
- Number of practices participating in PFK QI/practice facilitation projects: 51
- Number of staff: 234 FTEs



Learn more: [NationwideChildrens.org/Partners-For-Kids](https://www.NationwideChildrens.org/Partners-For-Kids)



## **NATIONWIDE CHILDREN'S HOSPITAL SUBSIDIARIES**

- Nationwide Children's Hospital
- Big Lots Behavioral Health Services at Nationwide Children's Hospital
- Nationwide Children's Educational Institute
- Nationwide Children's Hospital, Inc.
- Nationwide Children's Hospital Homecare
- Nationwide Children's Hospital Foundation
- Nationwide Children's Hospital Realty, Inc.
- Abigail Wexner Research Institute
- The Center for Family Safety and Healing at Nationwide Children's Hospital
- Children's Anesthesia Associates
- Children's Newborn Medicine, LLC
- Children's Psychiatrists, LLC
- Children's Physical Medicine & Rehabilitation Physicians, LLC
- Children's Radiological Institute
- Children's Surgical Associates Corp.
- Pediatric Academic Association
- PediatriCare Associates, LLC
- Pediatric Pathology Associates of Columbus
- Pediatric Rotor Wing, LLC
- Children's Community Practices, LLC
- Andelyn Biosciences, Inc.
- Partners For Kids
- Northwest Pediatric Specialists, LLC
- Nationwide Children's Hospital, Toledo, LLC
- The Kids Mental Health Foundation

# HOSPITAL LEADERSHIP

## 2024 BOARD OF DIRECTORS – CHAIRPERSONS

**Kirt Walker**

Nationwide Children’s Hospital,  
Inc./Nationwide Children’s Hospital

**George Barrett**

The Research Institute at Nationwide  
Children’s Hospital

**Libby Germain**

Nationwide Children’s Hospital  
Foundation

**Abigail S. Wexner**

The Center for Family Safety and Healing

## ADMINISTRATIVE STAFF

**Timothy Robinson**

Chief Executive Officer

**Ray Bignall, MD**

Chief Health Equity Officer

**Dennis Durbin, MD, MSCE**

President, the Abigail Wexner Research  
Institute at Nationwide Children’s Hospital

**Patty McClimon**

Senior Vice President of Strategic and  
Facilities Planning

**Rhonda Comer**

Senior Vice President, Legal Services

**Melissa Graves**

President, The Center for Family  
Safety and Healing

**Catherine Krawczeski, MD**

Chief Medical Officer and Chief of the  
Department of Pediatrics

**Richard Miller**

President and Chief Operating Officer

**Oluyinka O. Olutoye, MD, PhD**

Chief of Surgical Services

**Donna Teach**

Chief Marketing and Communications Officer

**Lee Ann Wallace, MBA, BSN, RN,  
NEA-BC**

Chief Nursing Officer

**Nelson Weichold**

Chief Financial Officer

**Lorina Wise, JD**

Chief Human Resources Officer

**Stephen Testa**

President, Nationwide Children’s Hospital  
Foundation

## MEDICAL STAFF OFFICERS

**Brent Adler, MD,**

Vice President

**Gregory Pearson, MD, FAAP, FACS**

President

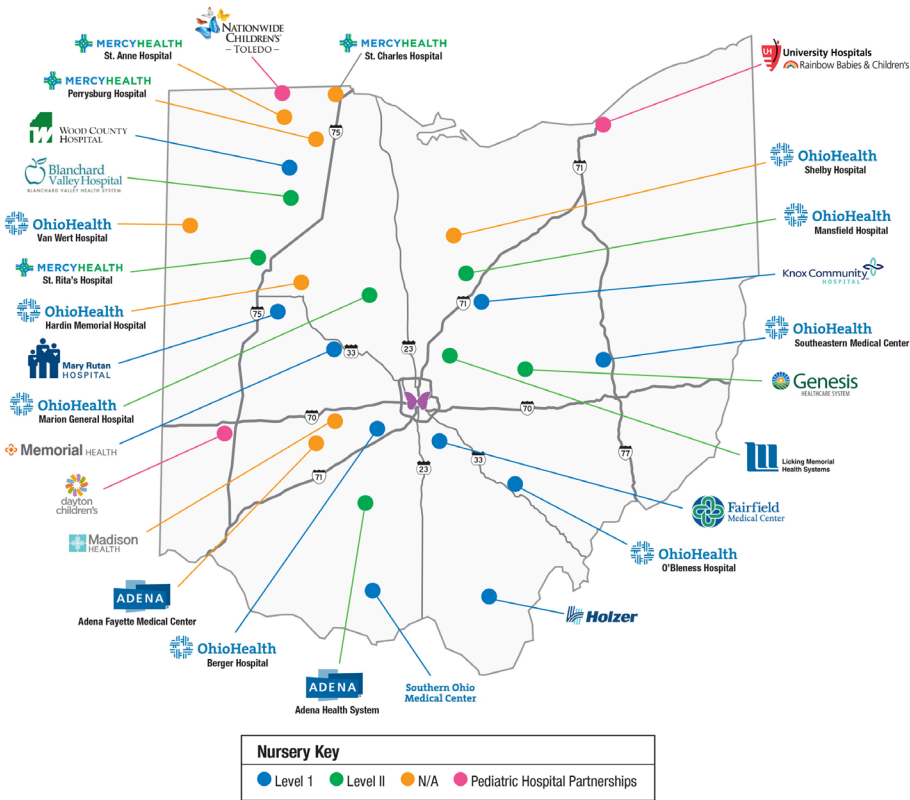
**Robert W. Snyder, MD,**

Past President

# REGIONAL LOCATIONS\*

TOTAL: 28

For more information about Nationwide Children's - Toledo locations and services, visit [NationwideChildrens.org/Toledo](https://NationwideChildrens.org/Toledo).



*\*Nationwide Children's is affiliated with several regional health care systems. We also partner with Dayton Children's Hospital through the Ohio Pediatric Care Alliance and with University Hospitals Rainbow Babies & Children's through The Congenital Heart Collaborative*

# CENTRAL OHIO LOCATIONS

## *Close To Home<sup>SM</sup>* Centers

- 2. Canal Winchester on Diley Road  
(with Urgent Care)
- 3. Canal Winchester on  
Winchester Blvd.
- 4. Clintonville
- 5. Downtown at 399 E. Main St.
- 6. Downtown at 495 E. Main St.
- 7. Downtown at 500 E. Main St.
- 8. Dublin on Hospital Dr.
- 9. Dublin on Perimeter Dr.
- 10. Dublin on Venture Dr.
- 11. East Columbus at 6435 E. Broad St.  
(with Urgent Care)
- 12. East Columbus at 6499 E. Broad St.
- 13. Hilliard (with Urgent Care)
- 14. Lewis Center  
(with Emergency Department)
- 15. Marysville (with Urgent Care)
- 16. Newark
- 17. Westerville at 185 W. Schrock Rd.
- 18. Westerville at 275 W. Schrock Rd.
- 19. Westerville on Cleveland Ave.  
(with Urgent Care)
- 51. Worthington

## **Primary Care Centers**

- 32. Eastland
- 33. Hilltop
- 50. Lincoln Village
- 34. Linden
- 26. Livingston Ambulatory Center
- 35. Near East
- 36. Northern Lights
- 37. Northland

- 38. Olentangy
- 39. Sharon Woods
- 40. South High
- 41. Westside
- 19. Westerville
- 42. Whitehall

## **Heart Center Locations**

- 1. Downtown Main Campus
- 2. Canal Winchester
- 10. Dublin
- 14. Lewis Center
- 31. Westerville Surgery Center

## **Laboratory Service Centers**

- 1. Downtown Main Campus
- 2. Canal Winchester
- 8. Dublin
- 11. East Columbus
- 43. Grove City
- 13. Hilliard
- 14. Lewis Center
- 26. Livingston Ambulatory Center
- 15. Marysville
- 16. Newark
- 19. Westerville

## **Affiliate Pediatric Practices**

- 44. Gahanna Pediatrics
- 45. Pediatrics of Grove City
- 46. Hand In Hand Pediatrics (Dublin)
- 47. Hand In Hand Pediatrics  
(Marysville)
- 48. Helping Hands Pediatrics
- 49. Upper Arlington Pediatrics

Other Locations

20. Big Lots Behavioral Health Pavilion

21. Child Development and Autism Centers at 187 W. Schrock Rd.

22. Child Development and Autism Centers at 189 W. Schrock Rd.

23. Child Development and Autism Centers at 195 W. Schrock Rd.

24. Dublin Sports Medicine and Orthopedic Center

25. Homecare and Hospice Services

26. Livingston Ambulatory Center
27. Livingston Orthopedic and Surgery Center

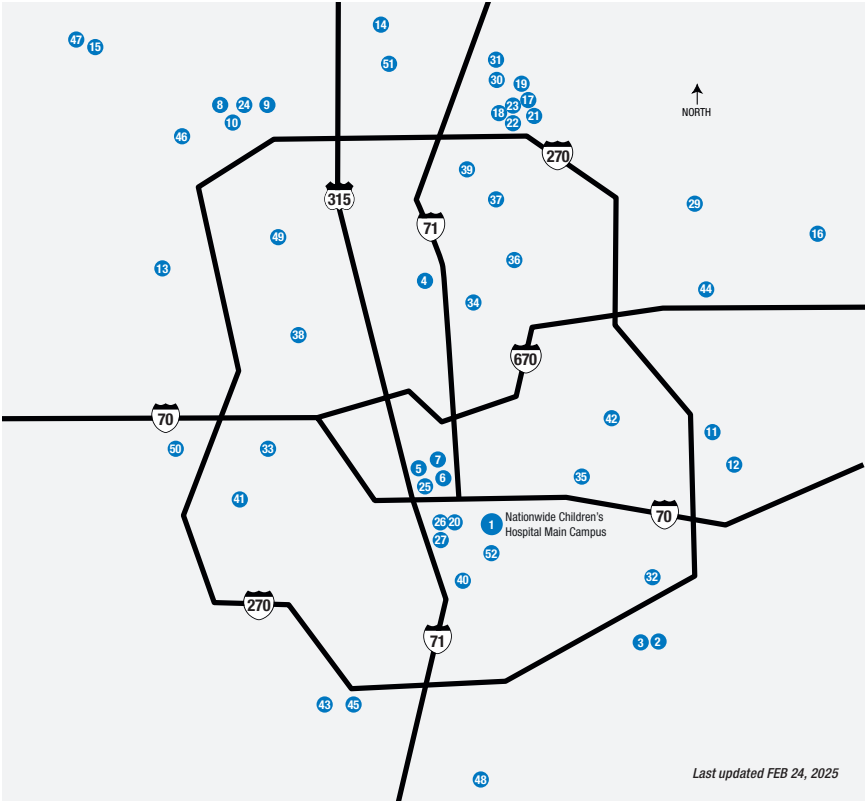
29. Philip Heit Center for Healthy New Albany

52. The Center for Family Safety and Healing

30. Westerville Sports Medicine and Orthopedic Center

31. Westerville Surgery Center
- For maps and directions, visit

[NationwideChildrens.org/Locations](https://www.nationwidechildrens.org/Locations)



Nationwide Children's Hospital  
700 Children's Drive  
Columbus, OH 43205-2696  
(614) 722-2000

**NationwideChildrens.org**

---

## CONNECT WITH US!



Facebook.com/NationwideChildrensHospital



Instagram.com/NationwideKids



TikTok.com/@NationwideKids



YouTube.com/NationwideChildrens



NationwideChildrensHospital.Tumblr.com



Blog: 700Childrens.NationwideChildrens.org

*Health care information from our pediatric experts*



Blog: PediatricsNationwide.org

*Advancing the conversation on child health*



**NATIONWIDE  
CHILDREN'S®**

*When your child needs a hospital, everything matters.*