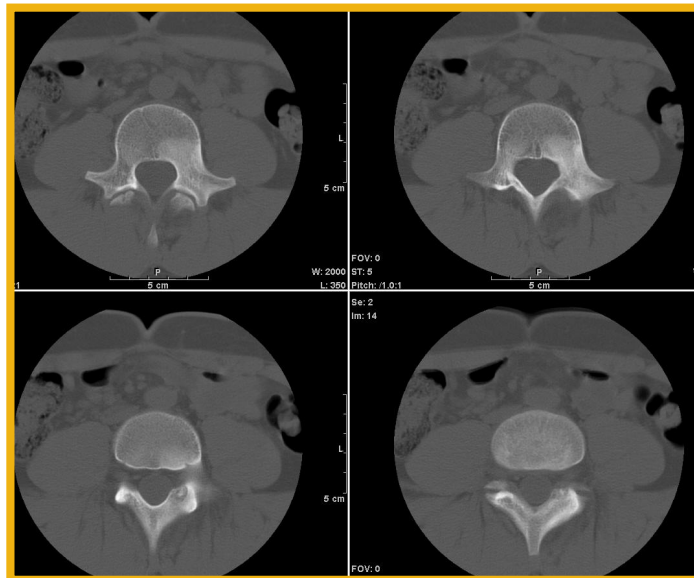
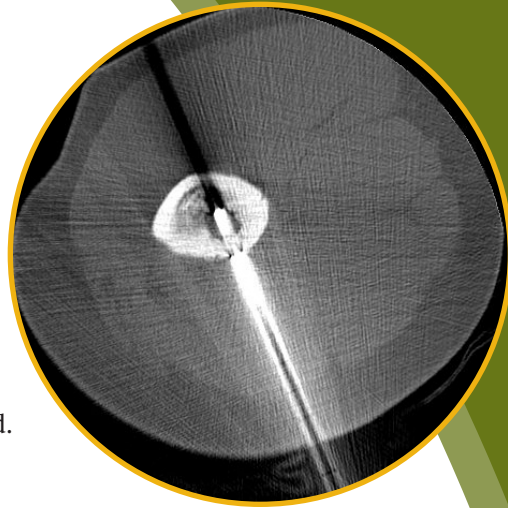


# Radiofrequency Ablation of Osteoid Osteoma

**Description of Procedure:** The osteoid osteoma bone mass is localized with CT guidance, a large gauge core biopsy is performed, and a 17G radiofrequency ablation (RFA) needle is inserted into the osteoid osteoma nidus. RFA results in thermal necrosis of the osteoid osteoma with 90 degree centigrade heat localized to the intraosseous lesion. RFA is effective in 94 percent of first attempts, and 100 percent if a second procedure is required.

**Impact:** Osteoid osteoma is a painful boney lesion that results in functional limitations that previously required surgery bone resection, with resultant immobilization and physical medicine rehabilitation.

**Alternative Procedure:** Long term medical analgesic therapy is an undesirable alternative with the associated risks of renal failure and chronic pain. Surgical boney resection requires immobilization for eight or more weeks, with requisite rehabilitation. RFA requires no immobilization, hospitalization, or rehabilitation therapy.



## Information

For more information on any of Nationwide Children's Radiology programs for your patients or practice, please call our Department of Radiology at (614) 722-2355 or the Nationwide Children's Physician Assistance Line at 1-800-927-PEDS.

To refer patients specifically for interventional radiology treatments or procedures, please call (614) 722-2355 or send via fax to (614) 722-2332.

To schedule diagnostic radiology procedures, please call Centralized Scheduling at (614) 722-6200.