



Visit www.NationwideChildrens.org/Maps
for maps and more detailed directions



What to Bring:

Please bring the following to all appointments and give them to the Hearing Team nurse:

- Legal guardian to provide consent
- Working hearing aids, ear molds and batteries
- For children ages birth to 3, a copy of your child's Individual Family Service Plan (IFSP), which can be provided to you by your Help Me Grow provider
- For the preschool or school-aged child, a copy of your child's most recent Multi-Factored Evaluation/ Evaluation Team Report (MFE/ETR) and Individual Education Plan (IEP). Please contact your child's school district Special Education office to request these documents.
- Copy of previous hearing, speech and medical evaluations including radiographic or blood tests
- Your child's insurance card and the name of the child's primary pediatrician or family practitioner
- Copy of your child's immunization record

Summary of the Cochlear Implant Candidacy Process:

1. Complete evaluations
2. Cochlear Implant Team meeting to review recommendations
3. Cochlear Implant Team decision: The cochlear implant surgeon or our Hearing Program coordinator will call you to share the team decision with you.
4. If approved for surgery, you need to contact your insurance company and obtain pre-authorization.
5. The surgery scheduler will contact you to set up a surgery date.
6. Surgery
7. On-going habilitation

Nationwide Children's Hospital
Outpatient Care Center, Suite 2A
555 South 18th St.
Columbus, Ohio 43205

(614) 722-2441 Hearing Program Coordinator
(614) 722-3857 Hearing Clinic Scheduling
(614) 722-6411 Cochlear Implant Team

NationwideChildrens.org/ENT

Driving Directions

From the North

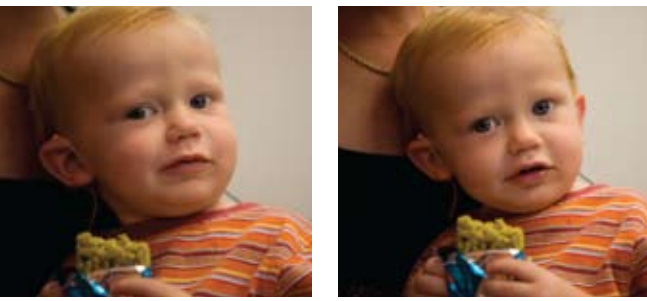
I-71 South to Main St. (Exit 108A)
Right on Main St. to Parsons Ave.
Right on Parsons Ave. to Livingston Ave.
Left on Livingston Ave. to Ann St.
Left on Ann St. to Children's Dr.

From the South

I-71 North to I-70 East
I-70 East to 18th St. (Exit 101B)
Right on 18th St.

Visit www.NationwideChildrens.org/Maps
for maps and more detailed directions.

The Cochlear Implant Candidacy Process



The Cochlear Implant Candidacy Process

Nationwide Children's Hospital has been performing cochlear implant surgeries since 1992. In 2004, a multidisciplinary Cochlear Implant Team was created to evaluate and provide comprehensive care and support to cochlear implant-candidate children and their families. Developed from many years of experience and expertise, the Cochlear Implant Program is designed to help your child optimize his or her hearing needs.

Our Team of Professionals...

- Evaluates the child's candidacy for the cochlear implant surgery
- Assesses the child's hearing-health background, speech and language skills, family support system, cognitive abilities, and intervention/school setting
- Establishes a baseline foundation of the child's skills

The following evaluations are needed in order to complete the candidacy process:

Medical Evaluation

The cochlear implant surgeon will obtain a thorough history, including family history. The surgeon will also perform a complete head and neck examination with focus on ears and craniofacial features. In addition, a CT scan and/or MRI of the ears and head will be ordered. Other exams needed may include genetic or other blood tests, EKG, and an eye exam. This is done in order to assess the cause of the hearing loss and find any other health problems that may impact cochlear implant surgery.

The Nationwide Children's Hearing Clinic is designed to provide this comprehensive evaluation and consultation for the child and family. The cochlear implant candidacy process is initiated at a Hearing Clinic visit. In addition, members of our Cochlear Implant Team may be present to initiate their evaluations. This visit may take as long as two hours.

Audiological (Hearing) Evaluation

During the hearing aid trial, the audiologist will test your child's hearing levels with his or her hearing aids on. The audiologist will review your child's past audiological records and assess how your child is adjusting to his or her hearing aids. All of this information will help determine if your child needs cochlear implant(s). The audiologist will provide education about cochlear implant(s) during the evaluation. Models of the cochlear implant systems are used in counseling families. The evaluation may take up to three hours.

Speech/Language Evaluation

With your child's hearing aids on, expressive/receptive language (verbal/signing and understanding), pronunciation, listening and oral-motor skills will be assessed by the speech language pathologist. This is done prior to getting a cochlear implant. This evaluation will determine current speech/language levels and assess whether a cochlear implant could benefit your child. This information will help in tracking progress once the child receives cochlear implant(s). This evaluation may take up to three hours.

Developmental Evaluation

The psychologist evaluates factors that may affect your child's development and potential success after a cochlear implant. Depending on your child's age, the evaluation may include brief one-on-one testing of your child's visual learning and development. We will discuss your child's history, family history, concerns with your child's development/behavior, and your expectations for a cochlear implant. The evaluation takes 90 minutes to two hours. It may take longer for children over the age of 3.

Social Work Evaluation

The social worker assesses child and family functioning before surgery. Family strengths and challenges regarding the candidacy process, as well as potential support resources, are also discussed. Child and family expectations for a cochlear implant, as well as further education, will also be addressed. The social worker can act as an advocate for you and your child and offer emotional support throughout the cochlear implant process. The social work evaluation takes approximately 30 minutes. It can be completed in person or over the phone.



Occupational Therapy Evaluation

The occupational therapist will assess your child's balance and motor abilities and sensory responsiveness to touch and movement. The occupational therapist will also assist the team in providing education about how to help your child wear his or her hearing aid(s) and/or cochlear implant(s).

Educational/Therapy Consultation

Our team will consult with your child's teachers, speech language pathologists, and Early Intervention specialists (i.e. Help Me Grow and Regional Infant Hearing Program), depending on your child's age. Routine communication between the educational program and the Cochlear Implant Team is vital for post-implant success.

Hearing and Cochlear Implant Program Coordinator

The program coordinator will assist you in coordinating the evaluation dates and will act as your point person throughout the candidacy process. The coordinator's role is to help make the cochlear implant candidacy process as streamlined as possible for you and your child.