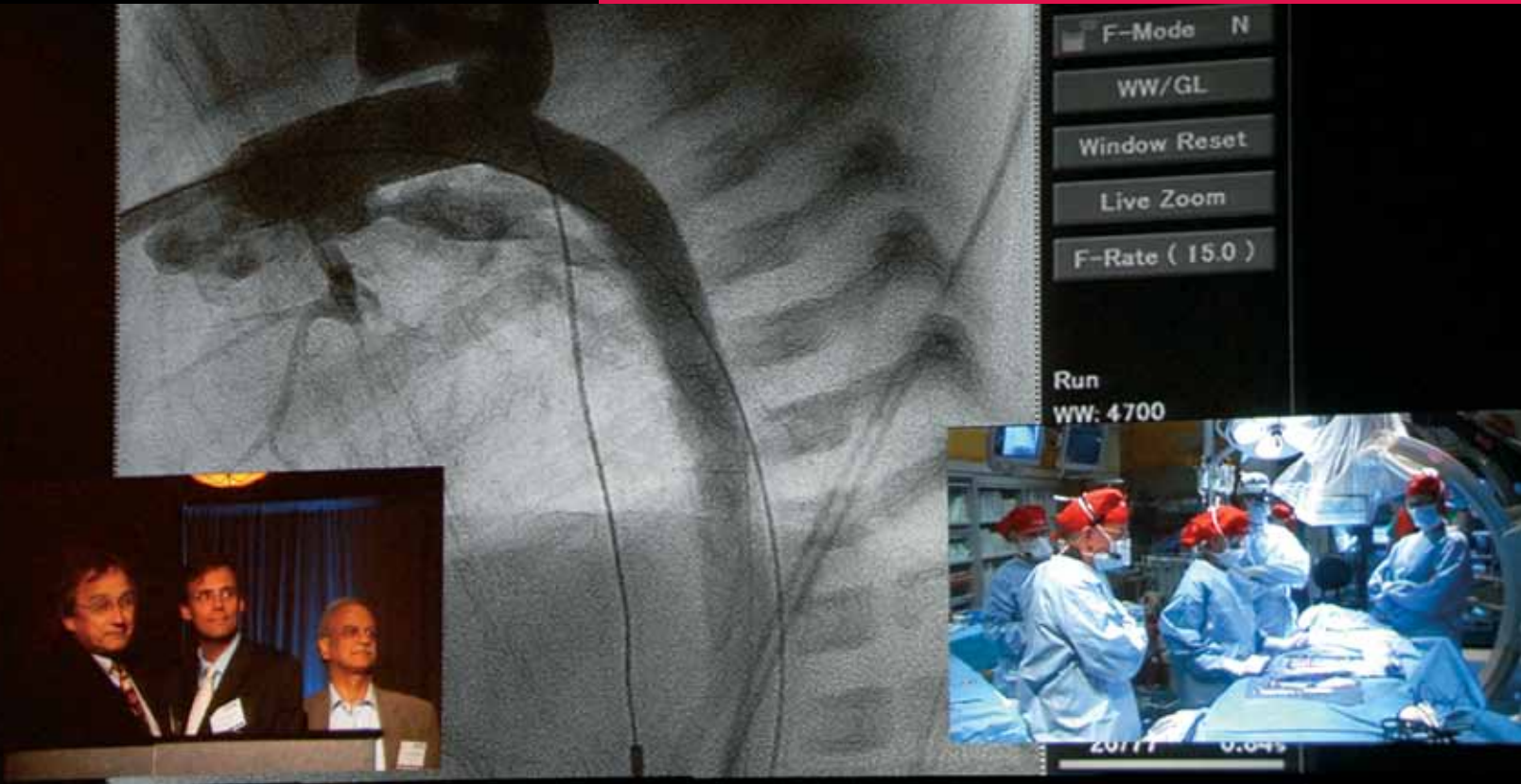


Where
Technology Meets
Innovation

ISHAC 2010

Two Perspectives. Single Focus.



*The Hybrid Cardiac Catheterization
and Operating Suites
at Nationwide Children's Hospital*

The Hybrid Cardiac Catheterization Suites – The first of their kind when opened in 2004.



The Hybrid Cardiac Catheterization Suites at Nationwide Children's Hospital are outfitted with the latest equipment and diagnostic technology, allowing the Hybrid team to do their jobs more effectively and efficiently while providing quality patient care. Multiple video monitors enable members of the team—those without direct visualization of the procedure—to see exactly what is taking place. With the push of a button, the Hybrid Suites' "control room" can stream real-time information to six monitors in the Suite or to anywhere in the world. Thus, referring physicians, no matter how far away, can participate in their patients' cases. This same technology supports outreach and teaching worldwide.

The Hybrid Cardiac Catheterization Suites feature:

- The first installation of the most advanced biplane X-ray imaging technology from TOSHIBA Medical Systems for more accurate assessment and diagnosis.
- Six interconnected, flat panel, high-resolution display screens from Stryker for superior visualization and improved, real-time information exchange among the Hybrid team members.
- The most recent advancement is the new Cradle Table designed for the Hybrid Suites. The five-axis design and new Cradle Table are incorporated into the biplane system, providing flexible positioning of the C-arm to create the Infinix-i exclusive 180 degree head-end access. This allows unparalleled access by the physician and staff as well as the ability to accommodate additional equipment.

Connecting the Hybrid Cardiac Catheterization and Operating Suites by video links creates an efficient, function-friendly work space for each member of the Hybrid team (interventional cardiologists, surgeons, electrophysiologists, echocardiographers, cardiac anesthesiologists, nurse practitioners, physician assistants, cath/OR nurses, technicians, and perfusionists). Working together in these Suites reduces the amount of time required to correct a heart problem and the amount of emotional and physical stress placed on patients and their families – which translates into less pain, less scarring and a faster recovery time for patients.

The Hybrid Cardiac Surgical Suite – Added in 2007



The innovative spirit of the cardiothoracic surgery and interventional cardiology teams at The Heart Center at Nationwide Children's Hospital came together to bring the technology first developed in the Hybrid Cardiac Catheterization Suites to a state-of-the-art Hybrid Cardiac Surgical Suite.

With more than 900 square feet of working space, the Surgical Suite is equipped with a fixed-base surgical table, modutec booms and surgical lighting from Maquet Surgical Workplaces, allowing for more precise and consistent imaging, as well as greater flexibility without taking up critical floor space.

The Hybrid Cardiac Surgical Suite features:

- A single-plane Flat Panel Detector (FPD) from TOSHIBA Medical Systems for a better quality picture which facilitates more accurate assessment and diagnosis.
- Nine interconnected, flat panel, high-resolution display screens for superior visualization and better information exchange among the team members. At least two monitors are visible to all team members at any time, from any location.
- Endoscopic cameras and video equipment allow intraoperative device therapy while the patient is on cardiopulmonary bypass.

The Hybrid Cardiac Surgical Suite is adjacent to the two Hybrid Cardiac Catheterization Suites in order to allow direct interaction of the teams of professionals involved in these procedures. The Suites are interconnected using state-of-the-art telecommunication equipment. Procedures can be viewed in the specially designed Teleconference Center or anywhere in the world.

Your Hosts: Nationwide Children's Hospital

Nationwide Children's broke ground in September 2008 for a new 12-floor, 750,000 square foot main hospital, slated to open in 2012. The campus master plan and new main hospital will add more than one million square feet of clinical and research space to the existing two million square-foot downtown campus. Through expansion of programs, research and facilities, Nationwide Children's has become one of the country's largest children's hospitals treating patients from every U.S. state and nine foreign countries with more than 820,000 patient visits last year. Nationwide Children's is also home to The Ohio State University College of Medicine Department of Pediatrics. Nationwide Children's new main hospital will have an entire floor dedicated to The Heart Center's patients.

"Research III," a \$93 million, six-floor world-class research facility, will add 225,000 square feet to the current 300,000 square feet in the Wexner Institute for Pediatric Research and Research II. The Research Institute at Nationwide Children's Hospital encompasses all of the hospital's research activity and is a top 10 National Institutes of Health-funded free-standing pediatric research center. Research III will be the home to the new Cardiovascular and Pulmonary Research Facility with state-of-the-art equipment including Hybrid Suites. Both the new main hospital and Research III will be LEED certified. The Leadership in Energy and Environmental Design Green Building Rating System was developed by the U.S. Green Building Council and provides a suite of standards for environmentally sustainable construction.

When the expansion is completed, Nationwide Children's Hospital is expected to be the second largest pediatric hospital in the U.S. Visit www.NationwideChildrensHospital.org to view the live cam for the latest updates.

The Heart Center

The mission of The Heart Center is to focus on providing the highest quality, family-centered, cost-effective, comprehensive care to all patients with congenital heart disease. In doing so, The Heart Center is one of the leading congenital heart disease centers in the world for infants, children and adults. Additionally, it is a major referral center for heart, lung, and heart-lung transplantation.

The Center has earned an international reputation for innovation – from the creation of the world's first Hybrid Cardiac Catheterization and Surgical Suites, to hosting of the International Symposium on the Hybrid Approach to Congenital Heart Disease (ISHAC). Always looking to improve care options, the medical and surgical teams at The Heart Center collaborated to develop a new Hybrid procedure specifically for infants with hypoplastic left heart syndrome.

Our Center for Cardiovascular and Pulmonary Research is part of one of the fastest growing, free-standing pediatric research centers in the nation ranked in the top ten for National Institutes of Health (NIH) funding. The research is guided by the principle that true success means improving the quality of life beyond the hospital. Our outcomes come from many perspectives, including clinical, economic, social, and developmental. We use our findings to create less stressful treatments that lead to better outcomes for patients, families and the community.

The Heart Center, in partnership with The Ohio State University Medical Center, has received NIH's first T32 training grant focused on pediatric and adult disease. This prestigious award will prepare the next generation of clinical and basic science researchers by focusing on congenital and acquired heart disease throughout the lifespan of a patient.

The combination of all of these efforts embodies the core mission of the Center – which includes less scarring, less pain, fewer complications and overall improved quality of life for children and adults with congenital heart disease.

Learn more about Nationwide Children's Hospital and The Heart Center at www.NationwideChildrens.org.



Out in front.
By your side.

