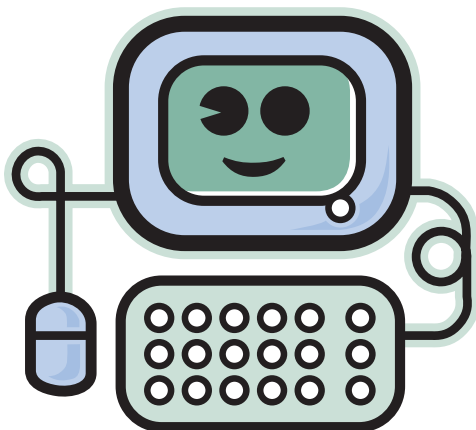


Important Numbers

Family and Volunteer Services: 722-3635

Information Desk: 722-2001

Security: 722-2130



On the Web

NationwideChildrens.org/Volunteering

e-mail: Volunteering@NationwideChildrens.org

Individual e-mail: First.Last@NationwideChildrens.org

Department Staff

Director

Jane Jarboe 722-4281

Secretaries

Ariel Ford 722-3664

Tammy Weidner 722-3635

Child Life and Volunteer Programs

Shannon Alford 722-3643

Amy Anderson 355-3047

Diana Anello 722-3642

Bonnie Bishop 722-3630

Heather Canty 722-4793

Laura Crisp 722-3639

Camille Dandurand 722-3631

Karen McHugh-Fornadel 722-4237

Marilyn Friedman 722-4276

Hollie Heither 722-3629

Annie Hickox 722-3616

Aimee McDurfee 722-3627

Tameko Martin 722-4282

Katie Nantz 722-3645

Julie Snider 722-3634

Markelle Springsteen 722-3647

Donna Trentel 722-4287

Arleen Tripp 722-3640

Lauren Vogel 722-4972

Stacey Weckesser 722-3625

Jacquie Wludyga 722-4277

Janine Zabriskie 722-3632

Music Therapy

Annie Urbanek 722-4280

Early Childhood Development Teacher/Coordinators

Susan Davis 722-3644

Gina Dunlap 722-4278

Karen Dorgan 722-3636

Renee Harmon 722-3635

Nicole May 722-4172

Megan Middleton 722-3628

Laura Mongold 722-4284

Columbus Public School Teachers

Sharon Cullman 722-6990

Jayne Derr 722-4285

Tifanie Rose 722-4283

Family Resource Center

Paul Seese 722-2252

Reach Out and Read

Claudia Barrett 355-8619

Erica Gunsch 355-8621

Hospice

Tiffany Argy 722-3576

Emergency Department & 5C

Dialysis & 6AW

Surgery Unit & East Broad CTH

Emergency Department

PICU & Sedations

Volunteer Program

Activity Assistant

Clubhouse & Radiology

Pulmonary & General Medicine 5T

Hematology/Oncology 5J

PICU & Rehab 3AE

Hematology/Oncology 5J & Hem Clinic

Volunteer Program & Westerville CTH

Contingent

Weekend/Contingent & ED

Neuro 3TS & Radiology

Lead Coordinator

Infectious Disease 6T

4AE & 4AW

Surgery 4T

Emergency Department

IDC, Pulmonary 6AE & Dublin CTH

5T & 5A

4J & 2A & NICUs

5C, 5J & RMH NICU

Weekend ECD Program Coverage

NCH Nurseries within OhioHealth Hospitals

3AE, 3TS, 6T and 6AW

4T, 4AW, & 4AE

Inpatients, Elementary School, Dialysis

3AE Rehab

Inpatients, Middle School and High School, Dialysis

Coordinator